



F I C H A T É C N I C A

ROMEO&JULIET



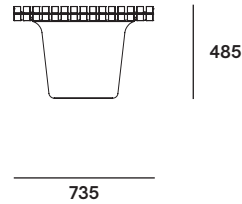
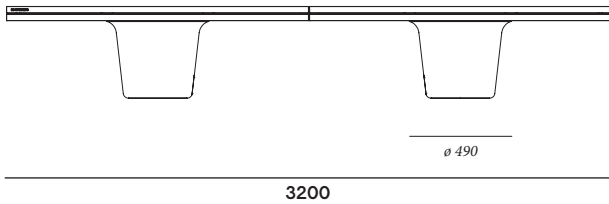
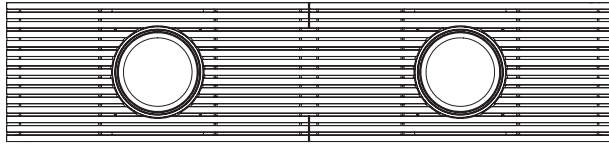
Romeo & Juliet

© design by Koen Baeyens,
Stijn goethals & Basile Graux

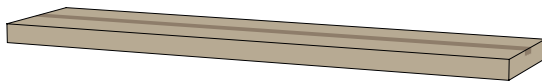
Floor fastening
Connection piece



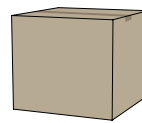
Romeo & Juliet



BOX 1: TABLETOP



BOX 2: CONTAINER + MOUNTING KIT



Box dimensions (mm)		L	W	H	Qty (#)	Volume (m ³)	Gross weight (kg)	Net weight (kg)	Packaging weight (kg)
Romeo & Juliet	Box 1	3285	760	120	1	0,30	120,98	116,45	4,53
	Box 2	630	630	560	1	0,22	11,16	9,40	1,76
	total:				0,56		132,14	125,85	6,29

The content of this document, in particular the mentioned models, is protected by copyrights and/or design rights. The present document and its content is communicated to you for information purposes only. Any partial or total reproduction or any other use without our prior written permission is strictly prohibited. This technical sheet remains subject to possible changes. **All dimensions are in mm**, unless mentioned otherwise. Extremis is not responsible for the errors in the documentation of products. All measurements are approximate and are provided for informational purposes only.

Tech sheet
20200302

Connection piece



732



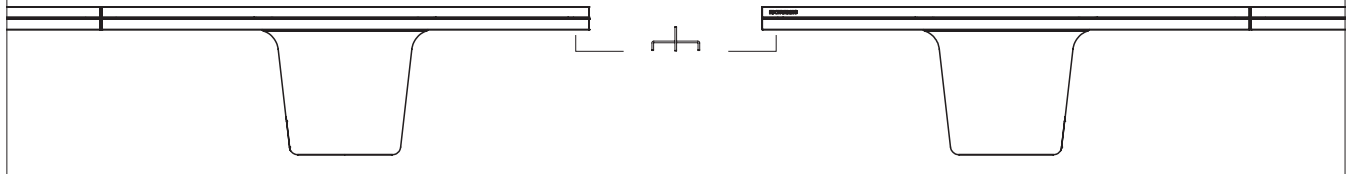
72

141

BOX 3: CONNECTION PIECE



Box dimensions (mm)		L	W	H	Qty (#)	Volume (m ³)	Gross weight (kg)	Net weight (kg)	Packaging weight (kg)
Connection piece	Box 3	760	170	120	1	0,02	9,01	8,01	1,00



Materials & colors



*Subject to change, check price list or www.extremis.com

Materials	Key facts	Thickness mm	Layer thickness micron	Density	In/outdoor	Water	UV colour fastness	Flame retarding
Jatoba hardwood	<ul style="list-style-type: none"> • Durability CLASS 1 • Exceptional quality • Characteristics: durability & stability • Bleeds when wood is exposed to rain for the first few times • The dye is water-soluble • Feels comfortable in all weather conditions 	35	n.a.	830 kg/m ³	Outdoor & indoor	n.a.	Untreated wood / turns grey after a while	
Hot dip galvanized steel structural parts	<ul style="list-style-type: none"> • Most durable method for protecting metal from rusting • Protective layer • Very long life span • 100% recyclable • Cradle to Cradle Certified™ 	2 - 10	50 - 100	7,50 10 ³ kg/m ³	Outdoor & indoor	n.a.	Very good: galvanisation will however become less shiny when used outdoors	NEN-EN 13501-1 A1*
Polyester flower pot	<ul style="list-style-type: none"> • Gel coating is sprayed onto the mould • The coating protects the polyester underneath against UV radiation 	2,50 - 3	30 - 60	1,70 10 ³ kg/m ³	Outdoor & indoor	n.a.	Very good: colour can fade to some extent when exposed to UV	NEN-EN 13501-1 C**



* NEN-EN13501-1 A1

Class A1 products will not contribute to fire in any stage, including fully developed fire. For this reason, they are assumed to be capable of satisfying all requirements of all lower classes as well.

** NEN-EN13501-1 C

As class D, but satisfying more stringent requirements.

Warnings

General

- Do not use any sharp tools to open the packaging.
- We strongly advise against using power tools.
- Tripping hazard, mind your step.
- Do not put out cigarettes on the bench.
- Not graffiti proof.
- Do not leave children unattended whilst playing on the bench.
- To avoid danger of suffocation, keep plastic bags away from babies and children.
- Colours can differ over years and from batch to batch.

Product

- Anchoring the product has to be done by qualified people.
- For anchoring: use suitable bolts or screws from a specialized store depending on the material your terrace is made of.
- We advise to choose a small tree or plant which climbs high and doesn't grow too wide. Preferably choose a

plant which fits in the climate in which the bench will be used. Ask your florist for advice.

- You can plant the shrubs either straight into the polyester containers or in the optional inner containers, thus creating a water reservoir. Not all plants like wet feet though.
- With most plants, the customer needs to provide a drainage hole in the outer pots.
- When not anchored, no corpulent people at one side.
- Do not stand or jump on the bench because this can damage the pots.
- Romeo & Juliet can only be used as a bench for sitting on when the pots are full of earth or when the pots are attached to the ground.
- For this, the pots must either be filled to the top edge with earth or weigh 50 kg.
- Max. 8 people or 640 kg.

Wood

- When delivered, the wood is untreated.

- The wood can bleed when it's exposed to rain for the first few times.
- Wood is a natural material and its look is different for every slat, plank and tree.
- Wood will gradually become rougher and start to turn grey as a consequence of exposure to the sun and rain. We recommend oiling the wood at regular intervals depending from location and general weather conditions.
- Clean regularly with mild detergent. Never use a high pressure cleaner as this will roughen the wood's smooth surface and irreparably damage the wood's fiber.
- Thorough cleaning with Extremis Wood Cleaner.
- We strongly recommend that you treat your wood with wood protector to protect it from stains - small cracks and crevices can also appear as part of this process. We strongly advise everyone to treat the furniture with our Wood Protector.

Applications

Residential: for your terrace, patio or courtyard

Project: perfect for placing several benches one against the other, adding some green in offices, company terraces, in grey industrial areas, public spaces, squares, event venues, schools, ...



F.a.q.

Q: Which plant fits the best in the pots?

A: We advise to choose a small tree or plant which climbs high and doesn't grow too wide. Preferably choose a plant which fits in the climate in which the bench will be used. Ask your florist for advice.

Q: Do you need to oil the wood?

A: When delivered, the wood is untreated. Exposure to sun and rain will gradually change its colour to silvery grey, and also roughen the surface. If you want to somewhat retain its original colour, you should oil them once a year. We recommend using RMC Hybrid Wood Protector. This treatment will also reduce the wood's proneness to splits, cracks, (grease) stain absorption, etc. To clean the wood you can use special products (www.rmc-extremis.com) or simply use a stiff bristle brush and some water. Be careful not to irreparably damage the wood fibres. For this reason, never use a high pressure cleaner.

Maintenance

Find maintenance instructions at the downloads section of extremis.com for:

WOOD

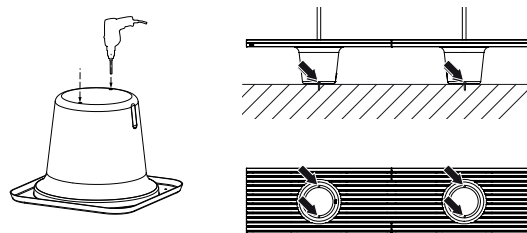
- Clean regularly with mild detergent.
- Thorough cleaning with Extremis Wood Cleaner.
- Oil the wood with Extremis Wood Protector. We recommend oiling the wood at regular intervals depending from location and general weather conditions.
- In order to smoothen the surface again after a thorough cleaning, lightly sand your wood with 80 grit sanding paper or a sanding pad.

Website

www.extremis.com/romeojuliet

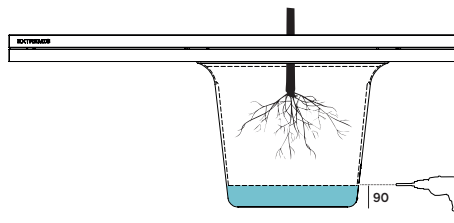
Floor fastening

Romeo & Juliet comes with optional floor fastening. Drill two holes in each polyester container where indicated.



Good to know

- The jatoba wood used in Romeo & Juliet is FSC® certified, which ensures that the wood we buy is sourced from legal, well-managed forests.
- Planting in an inner container, creating a water reservoir: drill an overflow hole in the side of the polyester container 9 cm above the ground to allow excess water to drain away.



- It's possible to attach several Romeo & Juliet benches to each other using a coupler. The space between the trees will always remain the same.

