



# INCLASS

SWATCH CARD / FINISHINGS  
MUESTRARIO DE ACABADOS  
FINITIONS

# INDEX

## LEATHERS – TELAS – TISSUS

---

**C1**  
Bond  
Duo

**C2**  
Steve/West  
Pixel  
Reno  
Cora  
Orum  
Hilton

**C3**  
Era  
Xtreme  
Medley  
Nils  
Ares

**C4**  
Step  
Aspect  
Fusion  
Valencia  
Silver

**C5**  
Canvas  
Remix 2  
Luna/Europost

**C6**  
SteelCut Trio 2  
Hero  
Fiord

**C10**  
Piel

**C11**  
Piel

**MESH**

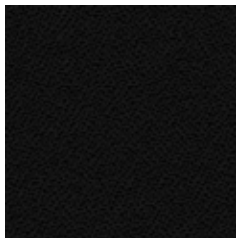
## MATERIALS – MATERIALES – MATÉRIAUX

---

**WOOD**

**METAL**

# C1 – BOND



9



6098



169



204



8078



109



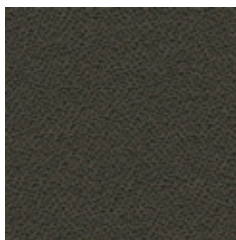
79



76



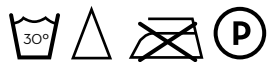
77



5518



81



WIDHT/ ANCHO/ LARGEUR: 140cm  
WEIHT/ PESO/ POID: 240gr/m2

## Composition:

100% polyolefin.

## Light fastness:

6 - 7, EN ISO 105-B02.

## Abrasion:

40.000 Martindale EN ISO 12947-2.

## Resistance to pilling:

4 - 5, EN ISO 12945-2.

## Dye fastness to rubbing:

Wet 4 - 5. Dry 4 - 5, EN ISO 105x12.

## Flammability:

UNE EN ISO 1021-1 • BS 5852 • DIN 66084  
classification P-c • CAL TB 117 section E, part  
1 • NFPA 260 cover fabric class 1.

\*Batch to catch variations may occur within commercial tolerances.

## Composición:

100% poliolefina.

## Solidez a la luz:

6 - 7, EN ISO 105-B02.

## Abrasión:

40.000 Martindale EN ISO 12947-2.

## R. a la formación de pilling:

4 - 5, EN ISO 12945-2.

## Solidez de las tinturas al frote:

Seco 4 - 5. Mojado 4 - 5, EN ISO 105x12.

## Inflamabilidad:

UNE EN ISO 1021-1 • BS 5852 • DIN 66084  
classification P-c • CAL TB 117 section E, part  
1 • NFPA 260 cover fabric class 1.

\*De tintada a tintada se pueden producir variaciones tolerables de color.

## Composición:

100% polyoléfine.

## Solidité à la lumière:

6 - 7, EN ISO 105-B02.

## Abrasion:

40.000 Martindale EN ISO 12947-2.

## Résistance au pilling:

4 - 5, EN ISO 12945-2.

## Résistance au frottement:

Sec 4 - 5. Humide 4 - 5, EN ISO 105x12.

## Inflamabilité:

UNE EN ISO 1021-1 • BS 5852 • DIN 66084  
classification P-c • CAL TB 117 section E, part  
1 • NFPA 260 cover fabric class 1.

\*Des variations tolérables de coloris d'un bain à un autre peuvent se manifester.

# C1 – DUO



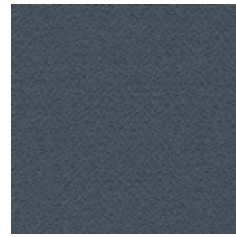
760



229



220



600



840



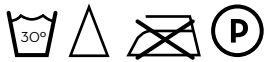
450



533



429



WIDHT/ ANCHO/ LARGEUR: 140cm  
WEIHT/ PESO/ POID: 300gr/m<sup>2</sup>

## Composition:

100% polyolefin.

## Light fastness:

6 - 7, EN ISO 105-B02.

## Abrasion:

40.000 Martindale EN ISO 12947-2.

## Resistance to pilling:

4 - 5, EN ISO 12945-2.

## Dye fastness to rubbing:

Wet 4 - 5. Dry 4 - 5, EN ISO 105x12.

## Flammability:

UNE EN ISO 1021-1 • BS 5852 • DIN 66084  
classification P-c • CAL TB 117 section E, part  
1 • NFPA 260 cover fabric class 1.

\*Batch to catch variations may occur within commercial tolerances.

## Composición:

100% poliolefina.

## Solidez a la luz:

6 - 7, EN ISO 105-B02.

## Abrasión:

40.000 Martindale EN ISO 12947-2.

## R. a la formación de pilling:

4 - 5, EN ISO 12945-2.

## Solidez de las tinturas al frote:

Seco 4 - 5. Mojado 4 - 5, EN ISO 105x12.

## Inflamabilidad:

UNE EN ISO 1021-1 • BS 5852 • DIN 66084  
classification P-c • CAL TB 117 section E, part  
1 • NFPA 260 cover fabric class 1.

\*De tintada a tintada se pueden producir variaciones tolerables de color.

## Composició:

100% poliolefina.

## Solidité à la lumière:

6 - 7, EN ISO 105-B02.

## Abrasion:

40.000 Martindale EN ISO 12947-2.

## Résistance au pilling:

4 - 5, EN ISO 12945-2.

## Résistance au frottement:

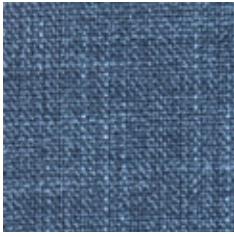
Sec 4 - 5. Humide 4 - 5, EN ISO 105x12.

## Inflamabilité:

UNE EN ISO 1021-1 • BS 5852 • DIN 66084  
classification P-c • CAL TB 117 section E, part  
1 • NFPA 260 cover fabric class 1.

\*Des variations tolérables de coloris d'un bain à un autre peuvent se manifester.

# C2 – STEVE/WEST



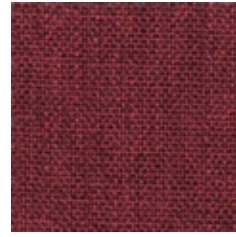
WEST 16



WEST 1



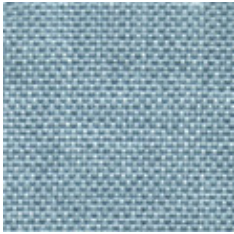
WEST 12



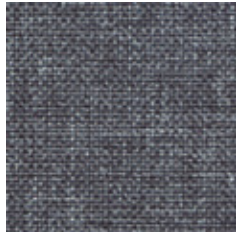
WEST 14



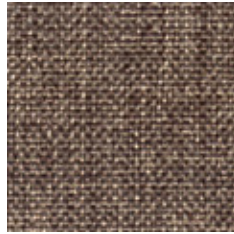
WEST 18



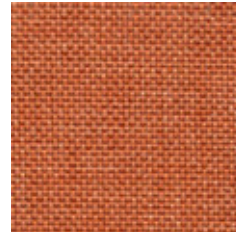
STEVE 27



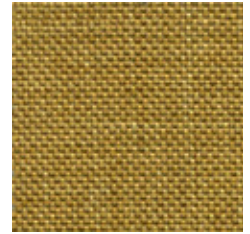
STEVE 18



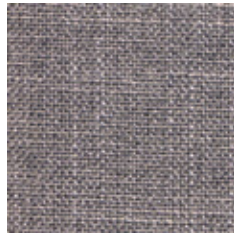
STEVE 13



STEVE 24



STEVE 23



WEST 4



WEST 7



WIDHT/ ANCHO/ LARGEUR: 140cm

WEIHT/ PESO/ POID: Steve 215gr/m2. West 248gr/m2

## Composition:

Steve 100% polyester.

West 75% polyester, 30% cotton.

## Light fastness:

5, EN ISO 105-Bo2.

## Abrasion:

Steve 25.000 Martindale EN ISO 12947-2.

West 40.000 Martindale EN ISO 12947-2.

## Resistance to pilling:

4 - 5, EN ISO 12945-2.

## Dye fastness to rubbing:

Steve Wet 4 - 5. Dry 4 - 5, EN ISO 105x12.

West Wet 5. Dry 5, EN ISO 105x12.

## Environnement:

Oeko-Tex.

\*Batch to catch variations may occur within commercial tolerances.

## Composición:

Steve 100% poliéster.

West 75% poliéster, 30% algodón.

## Solidez a la luz:

5, EN ISO 105-Bo2.

## Abrasión:

Steve 25.000 Martindale EN ISO 12947-2.

West 40.000 Martindale EN ISO 12947-2.

## R. a la formación de pilling:

4 - 5, EN ISO 12945-2.

## Solidez de las tinturas al frote:

Steve Seco 4 - 5. Mojado 4 - 5, EN ISO 105x12.

West Seco 5. Mojado 5, EN ISO 105x12.

## Medio ambiente:

Oeko-Tex.

\*De tintada a tintada se pueden producir variaciones tolerables de color.

## Composición:

Steve 100% polyester.

West 75% polyester, 30% cotton.

## Solidité à la lumière:

5, EN ISO 105-Bo2.

## Abrasion:

Steve 25.000 Martindale EN ISO 12947-2.

West 40.000 Martindale EN ISO 12947-2.

## Résistance au pilling:

4 - 5, EN ISO 12945-2.

## Résistance au frottement:

Steve Sec 4 - 5. Humide 4 - 5, EN ISO 105x12.

West Sec 5. Humide 5, EN ISO 105x12.

## Environnement:

Oeko-Tex.

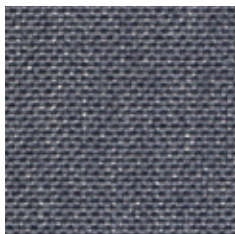
\*Des variations tolérables de coloris d'un bain à un autre peuvent se manifester.



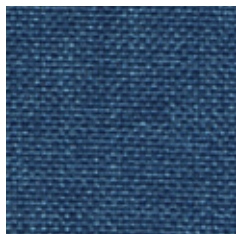
Anti stain



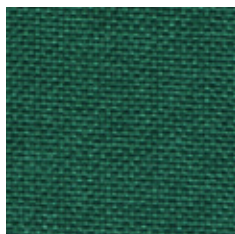
# C2 – PIXEL



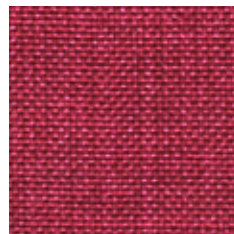
29



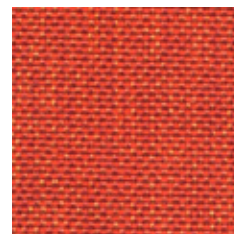
80



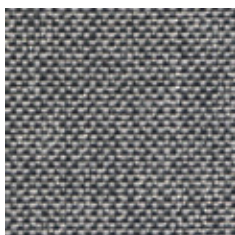
102



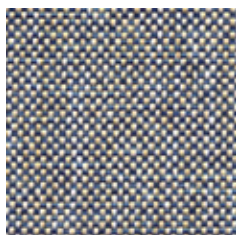
61



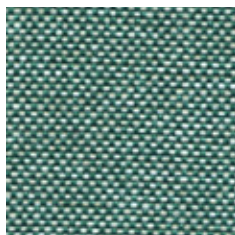
64



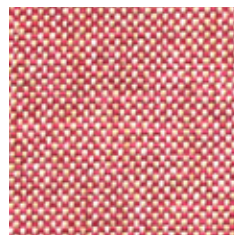
21



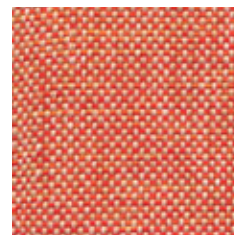
71



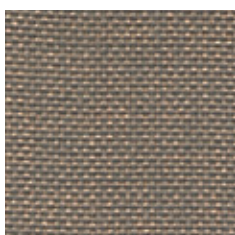
101



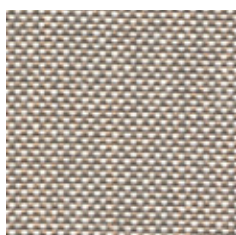
54



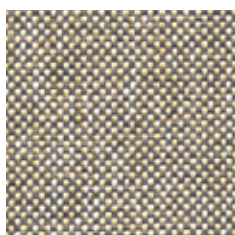
53



40



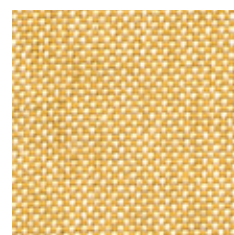
10



12



3



50



WIDHT/ ANCHO/ LARGEUR: 140cm  
WEIHT/ PESO/ POID: 255gr/m2

## Composition:

100% polyolefin.

## Light fastness:

6 - 7, EN ISO 105-B02.

## Abrasion:

40.000 Martindale EN ISO 12947-2.

## Resistance to pilling:

4 - 5, EN ISO 12945-2.

## Dye fastness to rubbing:

Wet 4 - 5. Dry 4 - 5, EN ISO 105x12.

## Flammability:

UNE EN ISO 1021-1 • BS 5852 • DIN 66084 classification P-c • CAL TB 117 section E, part 1 • NFPA 260 cover fabric class 1.

\*Batch to catch variations may occur within commercial tolerances.

## Composición:

100% poliolefina.

## Solidez a la luz:

6 - 7, EN ISO 105-B02.

## Abrasión:

40.000 Martindale EN ISO 12947-2.

## R. a la formación de pilling:

4 - 5, EN ISO 12945-2.

## Solidez de las tinturas al frote:

Seco 4 - 5. Mojado 4 - 5, EN ISO 105x12.

## Inflamabilidad:

UNE EN ISO 1021-1 • BS 5852 • DIN 66084 classification P-c • CAL TB 117 section E, part 1 • NFPA 260 cover fabric class 1.

\*De tintada a tintada se pueden producir variaciones tolerables de color.

## Composición:

100% polyoléfine.

## Solidité à la lumière:

6 - 7, EN ISO 105-B02.

## Abrasion:

40.000 Martindale EN ISO 12947-2.

## Résistance au pilling:

4 - 5, EN ISO 12945-2.

## Résistance au frottement:

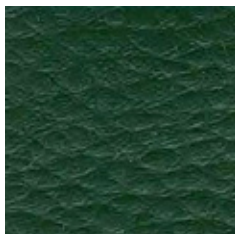
Sec 4 - 5. Humide 4 - 5, EN ISO 105x12.

## Inflamabilité:

UNE EN ISO 1021-1 • BS 5852 • DIN 66084 classification P-c • CAL TB 117 section E, part 1 • NFPA 260 cover fabric class 1.

\*Des variations tolérables de coloris d'un bain à un autre peuvent se manifester.

# C2 – RENO



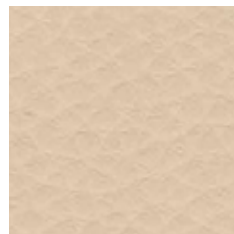
37



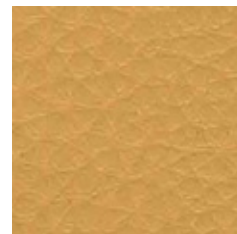
8



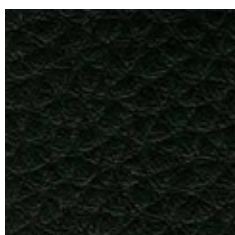
96



56



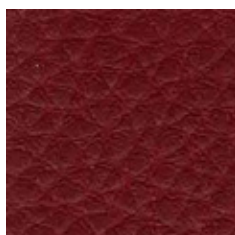
51



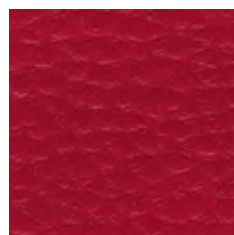
75



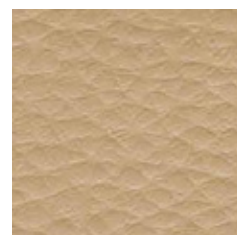
97



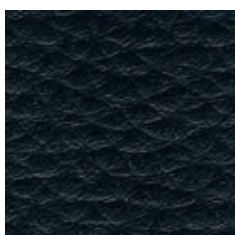
25



78



6



47



5



WIDHT/ ANCHO/ LARGEUR: 140cm  
WEIHT/ PESO/ POID: 550gr/m<sup>2</sup>

## Composition:

100% P.V.C.

## Light fastness:

6 - 7, ISO 105 Bo2.

## Abrasion:

45.000 Martindale EN ISO 12947.

## Breaking strength:

Warp 213N. Weft 245N EN ISO 13934-1 • UNE-EN ISO 1421.

## Tear strength:

Warp 50,16% N. Weft 65,16% N EN ISO 13937-3.

## Resistance to pilling:

5, ISO 12945-2.

## Fastness to rubbing:

Wet 4 - 5. Dry 4 - 5, ISO 105 X12.

## Flammability:

UNE - EN 1021: 1 & 2 • BS 5852 • EN 23 727-90 IR.

\*Batch to batch variations may occur within commercial tolerances.

## Composición:

100% P.V.C.

## Solidez a la luz:

6 - 7, ISO 105 Bo2.

## Abrasión:

45.000 Martindale EN ISO 12947.

## Resistencia a la rotura:

Urdimbre 213N. Trama 245N EN ISO 13934-1 • UNE-EN ISO 1421.

## Resistencia a los desgarros:

Urdimbre 50,16% N. Trama 65,16% N EN ISO 13937-3.

## R. a la formación de pilling:

5, ISO 12945-2.

## Resistencia al rozamiento:

Seco 4 - 5. Mojado 4 - 5, ISO 105 X12.

## Inflamabilidad:

UNE - EN 1021: 1 & 2 • BS 5852 • EN 23 727-90 IR.

\*De tintada a tintada se pueden producir variaciones tolerables de color.

## Composition:

100% P.V.C.

## Solidité à la lumière:

6 - 7, ISO 105 Bo2.

## Abrasion:

45.000 Martindale EN ISO 12947.

## Résistance à la rupture:

Warp 213N. Trame 245N EN ISO 13934-1 • UNE-EN ISO 1421.

## Résistance à la déchirure:

Warp 50,16% N. Trame 65,16% N EN ISO 13937-3.

## Résistance au pilling:

5, ISO 12945-2.

## Résistance aux frottements:

Sec 4 - 5. Humide 4 - 5, ISO 105 X12.

## Inflamabilité:

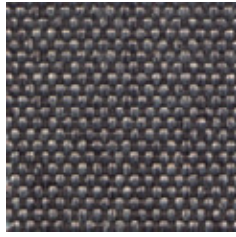
UNE - EN 1021: 1 & 2 • BS 5852 • EN 23 727-90 IR.

\*Des variations tolérables de coloris d'un bain à un autre peuvent se manifester.

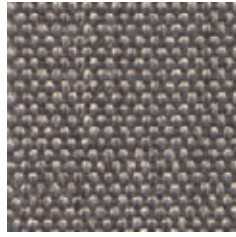
# C2 – CORA



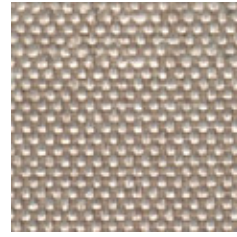
2



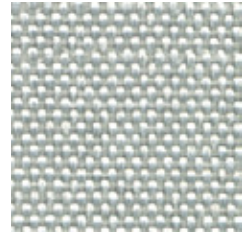
20



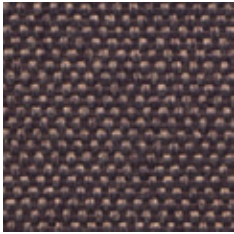
14



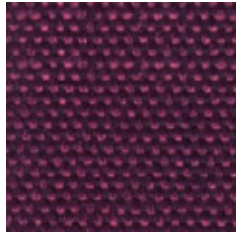
12



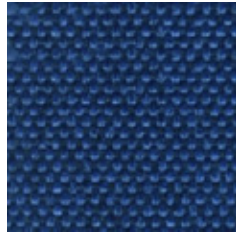
3



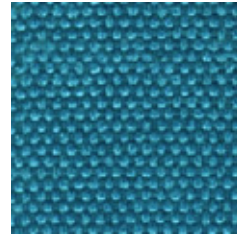
27



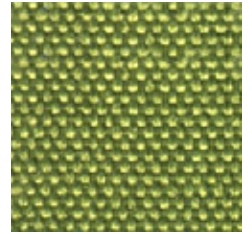
9



18



17



32



WIDHT/ ANCHO/ LARGEUR: 140cm  
WEIHT/ PESO/ POID: 350gr/m2

**Composition:**

100% polyester.

**Light fastness:**

5 - 6 EN ISO 105-B02.

**Abrasion:**

100.000 Martindale EN ISO 12947-2.

**Resistance to pilling:**

4 - 5, EN ISO 12945-2.

**Dye fastness to rubbing:**

Wet 4 - 5. Dry 4 - 5, EN ISO 105x12.

**Environment:**

Oeko-Tex.

\*De tintada a tintada se pueden producir variaciones tolerables de color.

**Composición:**

100% poliéster.

**Solidez a la luz:**

5 - 6 EN ISO 105-B02.

**Abrasión:**

100.000 Martindale EN ISO 12947-2.

**R. a la formación de pilling:**

4 - 5, EN ISO 12945-2.

**Solidez de las tinturas al frote:**

Seco 4 - 5. Mojado 4 - 5, EN ISO 105x12.

**Medio ambiente:**

Oeko-Tex.

\*Batch to batch variations may occur within commercial tolerances.

**Composición:**

100% polyester.

**Solidité à la lumière:**

5 - 6 EN ISO 105-B02.

**Abrasion:**

100.000 Martindale EN ISO 12947-2.

**Résistance au pilling:**

4 - 5, EN ISO 12945-2.

**Résistance au frottement:**

Sec 4 - 5. Humide 4 - 5, EN ISO 105x12.

**Environnement:**

Oeko-Tex.

\*Des variations tolérables de coloris d'un bain à un autre peuvent se manifester.

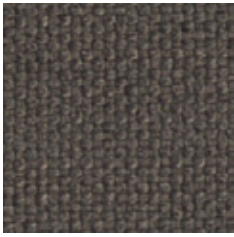


Anti stain

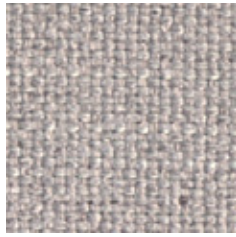




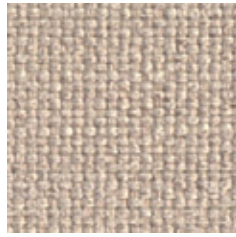
# C2 – ORUM



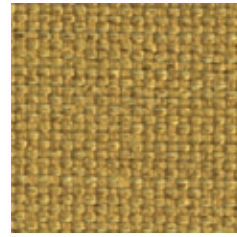
10



4



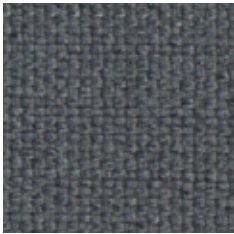
8



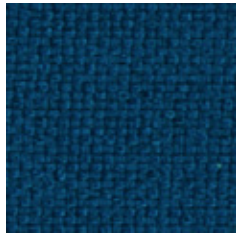
11



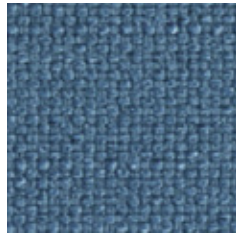
19



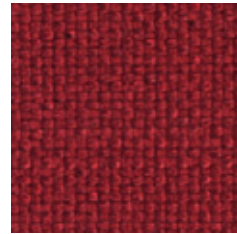
1



7



13



14



WIDHT/ ANCHO/ LARGEUR: 140cm  
WEIHT/ PESO/ POID: 450gr/m<sup>2</sup>

## Composition:

100% polyester.

## Light fastness:

4 - 5 EN ISO 105-B02.

## Abrasion:

35.000 Martindale EN ISO 12947-2.

## Resistance to pilling:

4 - 5, EN ISO 12945-2.

## Dye fastness to rubbing:

Wet 4 - 5. Dry 4 - 5, EN ISO 105x12.

\*De tintada a tintada se pueden producir variaciones tolerables de color.

## Composición:

100% poliéster.

## Solidez a la luz:

4 - 5 EN ISO 105-B02.

## Abrasión:

35.000 Martindale EN ISO 12947-2.

## R. a la formación de pilling:

4 - 5, EN ISO 12945-2.

## Solidez de las tinturas al frote:

Seco 4 - 5. Mojado 4 - 5, EN ISO 105x12.

\*Batch to batch variations may occur within commercial tolerances.

## Composición:

100% polyester.

## Solidité à la lumière:

4 - 5 EN ISO 105-B02.

## Abrasion:

35.000 Martindale EN ISO 12947-2.

## Résistance au pilling:

4 - 5, EN ISO 12945-2.

## Résistance au frottement:

Sec 4 - 5. Humide 4 - 5, EN ISO 105x12.

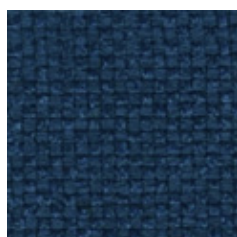
\*Des variations tolérables de coloris d'un bain à un autre peuvent se manifester.



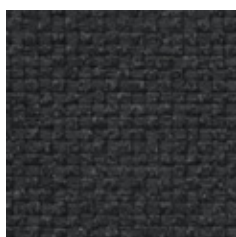
Anti stain



# C2 – HILTON



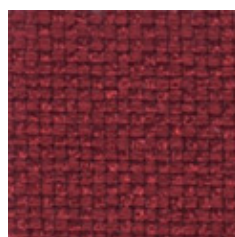
14



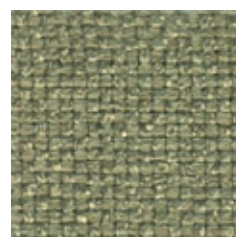
1



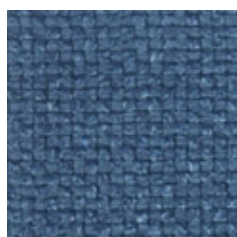
9



12



18



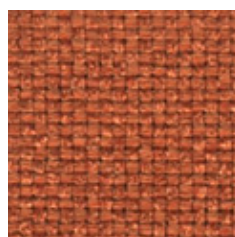
13



2



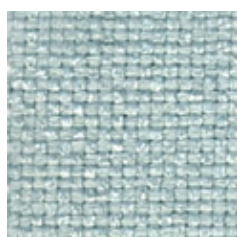
8



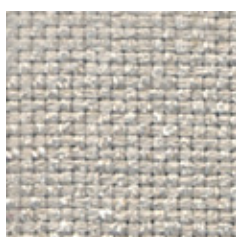
11



17



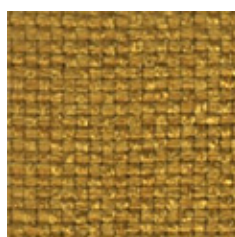
16



4



6



10



WIDHT/ ANCHO/ LARGEUR: 140cm  
WEIHT/ PESO/ POID: 380gr/m<sup>2</sup>

## Composition:

100% polyester.

## Lightfastness:

4, ISO 105-B02.

## Abrasion:

25.000 Martindale EN ISO 12947-2.

## Resistance to pilling:

4 - 5, EN ISO 12945/2.

## Fastness to rubbing:

Wet 4 - 5. Dry 4 - 5, ISO 105 X12.

\*Batch to batch variations may occur within commercial tolerances.

## Composición:

100% poliéster.

## Solidez a la luz:

4, ISO 105-B02.

## Abrasión:

25.000 Martindale EN ISO 12947-2.

## Resistencia a la formación de pilling:

4 - 5, EN ISO 12945/2.

## Resistencia al rozamiento:

Humedo 4 - 5. Seco 4 - 5, ISO 105 X12.

\*De tintada a tintada se pueden producir variaciones tolerables de color.

## Composition:

100% polyester.

## Solidité à la lumière:

4, ISO 105-B02.

## Abrasion:

25.000 Martindale EN ISO 12947-2.

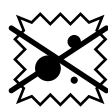
## Résistance au pilling:

4 - 5, EN ISO 12945/2.

## Résistance aux frottements:

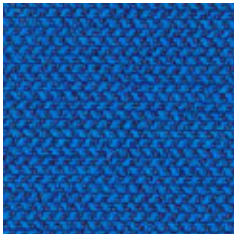
Sec 4 - 5. Humide 4 - 5, ISO 105 X12.

\*Des variations tolérables de coloris d'un bain à un autre peuvent se manifester.

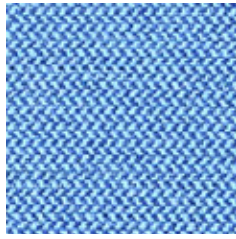


Anti stain

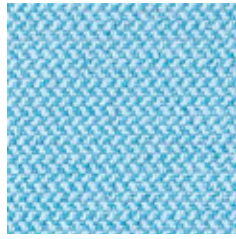
# C3 – ERA



12



08



20



11



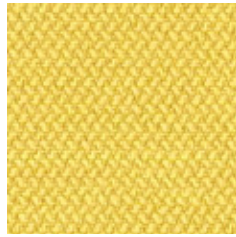
13



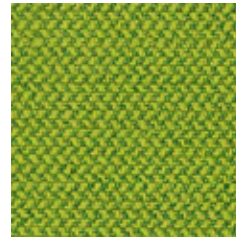
21



2



3



16



1



19



6



9



WIDHT/ ANCHO/ LARGEUR: 140cm  
WEIHT/ PESO/ POID: 320gr/m<sup>2</sup>

**Composition:**

100% polyester.

**Light fastness:**

5, EN ISO 105 B02.

**Abrasion:**

100.000 Martindale EN ISO 12947.

**Fastness to rubbing:**

Wet 4, Dry 4, ISO 105 X12.

**Flammability:**

BS EN 1021-1 • BS EN 1021-2 • BS 7176.

\*Batch to batch variations may occur within commercial tolerances.

**Composición:**

100% poliéster.

**Solidez a la luz:**

5, EN ISO 105 B02.

**Abrasión:**

100.000 Martindale EN ISO 12947.

**Resistencia al rozamiento:**

Humedo 4, Seco 4, ISO 105 X12.

**Inflamabilidad:**

BS EN 1021-1 • BS EN 1021-2 • BS 7176.

\*De tintada a tintada se pueden producir variaciones tolerables de color.

**Composition:**

100% polyester.

**Solidité à la lumière:**

5, EN ISO 105 B02.

**Abrasion:**

100.000 Martindale EN ISO 12947.

**Résistance aux frottements:**

Sec 4, Humide 4, ISO 105 X12.

**Inflamabilité:**

BS EN 1021-1 • BS EN 1021-2 • BS 7176.

\*Des variations tolérables de coloris d'un bain à un autre peuvent se manifester.

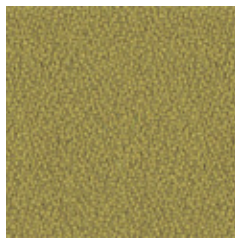
# C3 – XTREME



91



108



77



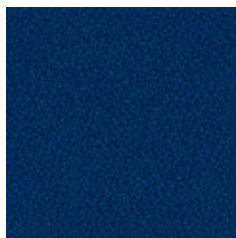
96



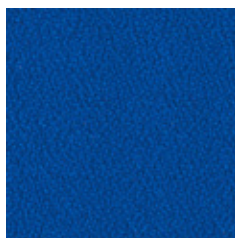
74



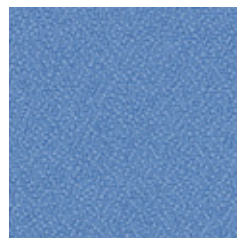
84



26



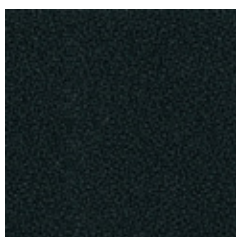
82



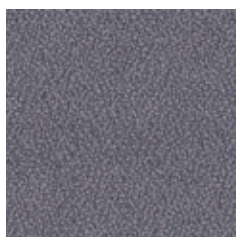
169



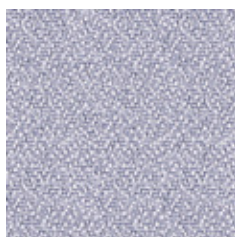
174



9



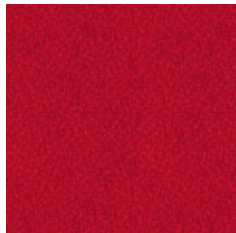
81



173



106



79



76



**WIDHT/ ANCHO/ LARGEUR:** 140cm  
**WEIHT/ PESO/ POID:** 310gr/m2

## Composition:

100% recycled polyester.

## Light fastness:

6, EN ISO 105 B02.

## Abrasión:

100.000 Martindale EN ISO 12947.

## Resistance to pilling:

5, ISO 12945-2.

## Fastness to rubbing:

Wet 4, Dry 4, ISO 105 X12.

## Flammability:

BS EN 1021-1 • BS EN 1021-2 • BS 7176 Low Hazard  
• BS 5852 section 4 ignition source 5 • BS 7176  
Medium Hazard • UNI 8456 & UNI 9174 Class 1 •  
NF-P-92-507 M1 • NF D 60-013 • DIN 4102 B1.

## Environment:

Recycled • EU Ecolabel.

\*Batch to batch variations may occur within commercial tolerances.

## Composición:

100% poliéster reciclado.

## Solidez a la luz:

6, EN ISO 105 B02.

## Abrasión:

100.000 Martindale EN ISO 12947.

## R. a la formación de pilling:

5, ISO 12945-2.

## Resistencia al rozamiento:

Humedo 4, Seco 4, ISO 105 X12.

## Inflamabilidad:

BS EN 1021-1 • BS EN 1021-2 • BS 7176 Low Hazard  
• BS 5852 section 4 ignition source 5 • BS 7176  
Medium Hazard • UNI 8456 & UNI 9174 Class 1 •  
NF-P-92-507 M1 • NF D 60-013 • DIN 4102 B1.

## Medio ambiente:

Reciclado • EU Ecolabel.

\*De tintada a tintada se pueden producir variaciones tolerables de color.

## Composition:

100% polyester recyclé.

## Solidité à la lumière:

6, EN ISO 105 B02.

## Abrasion:

100.000 Martindale EN ISO 12947.

## Résistance au pilling:

5, ISO 12945-2.

## Résistance aux frottements:

Sec 4, Humide 4, ISO 105 X12.

## Inflamabilité:

BS EN 1021-1 • BS EN 1021-2 • BS 7176 Low Hazard  
• BS 5852 section 4 ignition source 5 • BS 7176  
Medium Hazard • UNI 8456 & UNI 9174 Class 1 •  
NF-P-92-507 M1 • NF D 60-013 • DIN 4102 B1.

## Environnement:

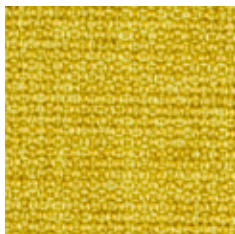
Recyclé • EU Ecolabel.

\*Des variations tolérables de coloris d'un bain à un autre peuvent se manifester.

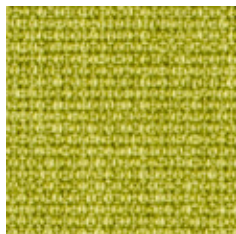


# C3 – MEDLEY

by **Gabriel**



62002



68002



67002



61003



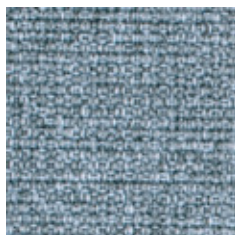
61004



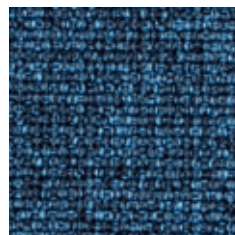
64019



65011



66008



66010



60999



60° shrinkage max. 1%



74° shrinkage max. 3%

WIDHT/ ANCHO/ LARGEUR: 140cm  
WEIHT/ PESO/ POID: 510gr/m<sup>2</sup>

## Composition:

100% polyester.

## Light fastness:

5 - 7, EN ISO 105 B02.

## Abrasion:

75.000 Martindale EN ISO 12947-2.

## Resistance to pilling:

4, EN ISO 12945-2.

## Fastness to rubbing:

Wet 4 - 5. Dry 4 - 5, ISO 105 X12.

## Flammability:

BS EN 1021 1&2 • BS EN 1021-1 cigarette • BS 5852 Part 1 0,1 Cigarette & match • California Bulletin CAL 117-E-Class 1 • Class Uno  
UNI 9175 Class 1l EMME • CA TB 117-2013 • ÖNORM B 3825-B2-3800-Q1 UK.

\*Batch to catch variations may occur within commercial tolerances.

## Composición:

100% poliéster.

## Solidez a la luz:

5 - 7, EN ISO 105 B02.

## Abrasión:

75.000 Martindale EN ISO 12947-2.

## Resistencia a la formación de pilling:

4, EN ISO 12945-2.

## Resistencia al rozamiento:

Humedo 4 - 5. Seco 4 - 5, ISO 105 X12.

## Inflamabilidad:

BS EN 1021 1&2 • BS EN 1021-1 cigarette • BS 5852 Part 1 0,1 Cigarette & match • California Bulletin CAL 117-E-Class 1 • Class Uno  
UNI 9175 Class 1l EMME • CA TB 117-2013 • ÖNORM B 3825-B2-3800-Q1 UK.

\*De tintada a tintada se pueden producir variaciones tolerables de color.

## Composition:

100% polyester.

## Solidité à la lumière:

5 - 7, EN ISO 105 B02.

## Abrasion:

75.000 Martindale EN ISO 12947-2.

## Résistance aux frottements:

4, EN ISO 12945-2.

## Résistance aux frottements:

Sec 4 - 5. Humide 4 - 5, ISO 105 X12.

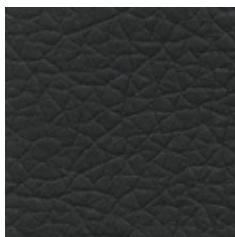
## Inflamabilité:

BS EN 1021 1&2 • BS EN 1021-1 cigarette • BS 5852 Part 1 0,1 Cigarette & match • California Bulletin CAL 117-E-Class 1 • Class Uno  
UNI 9175 Class 1l EMME • CA TB 117-2013 • ÖNORM B 3825-B2-3800-Q1 UK.

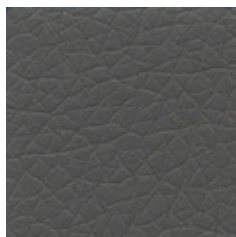
\*Des variations tolérables de coloris d'un bain à un autre peuvent se manifester.



# C3 – NILS



1



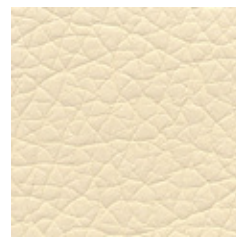
3



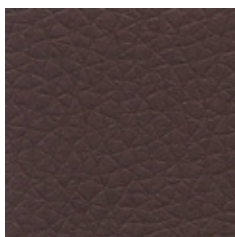
7



10



14



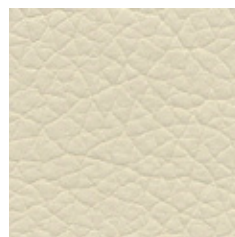
24



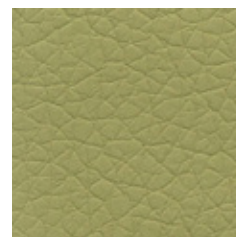
21



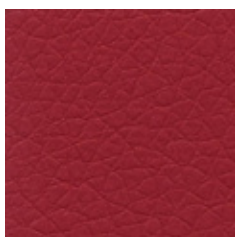
9



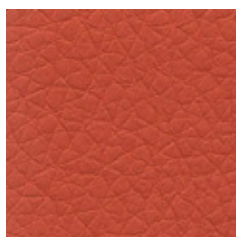
16



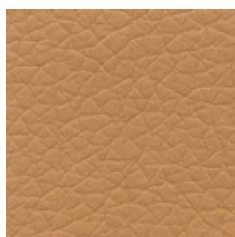
42



33



30



20



WIDHT/ ANCHO/ LARGEUR: 142cm  
WEIHT/ PESO/ POID: 530gr/m2

## Composition:

100% polyurethane.

## Light fastness:

5, ISO 105 B02.

## Abrasion:

100.000 Martindale EN ISO 12947.

## Breaking strength:

Warp 1194N. Weft 920N EN ISO 13934-1.

## Tear strength:

Warp 72,5N. Weft 51,1N EN ISO 13937-3.

## Fastness to rubbing:

Wet 5. Dry 5, ISO 105 X12.

## Flammability:

BS EN 1021 1&2 • BS EN 1021-1 cigarette • BS 5852 Part 1 0,1 Cigarette & match UNE-EN 1021.

\*Batch to catch variations may occur within commercial tolerances.

## Composición:

100% poliuretano.

## Solidez a la luz:

5, ISO 105 B02.

## Abrasión:

100.000 Martindale EN ISO 12947.

## Resistencia a la rotura:

Urdimbre 1194N. Trama 920N EN ISO 13934-1.

## Resistencia a los desgarros:

Urdimbre 72,5N. Trama 51,1N EN ISO 13937-3.

## Resistencia al rozamiento:

Seco 5. Mojado 5, ISO 105 X12.

## Inflamabilidad:

BS EN 1021 1&2 • BS EN 1021-1 cigarette • BS 5852 Part 1 0,1 Cigarette & match UNE-EN 1021.

\*De tintada a tintada se pueden producir variaciones tolerables de color.

## Composition:

100% polyuréthane.

## Solidité à la lumière:

5, ISO 105 B02.

## Abrasion:

100.000 Martindale EN ISO 12947.

## Résistance à la rupture:

Warp 1194N. Trame 920N EN ISO 13934-1.

## Résistance à la déchirure:

Warp 72,5N. Trame 51,1N EN ISO 13937-3.

## Résistance aux frottements:

Sec 5. Humide 5, ISO 105 X12.

## Inflammabilité:

BS EN 1021 1&2 • BS EN 1021-1 cigarette • BS 5852 Part 1 0,1 Cigarette & match UNE-EN 1021.

\*Des variations tolérables de coloris d'un bain à un autre peuvent se manifester.



temperature conductivity  
conductividad de temperatura  
temperature thermique



anti allergic  
antialérgico  
antiallergique



chemical free  
sin productos químicos  
ne pas produits chimiques

# C3 – ARES



25



19



20



18



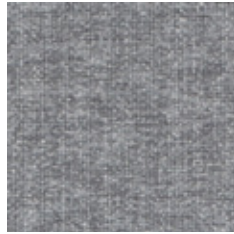
17



1



2



3



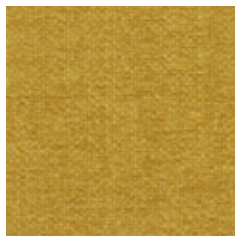
4



14



24



12



9



10



WIDHT/ ANCHO/ LARGEUR: 140cm  
WEIHT/ PESO/ POID: 400gr/m<sup>2</sup>

## Composition:

100% polyester.

## Light fastness:

4, EN ISO 105 B02.

## Abrasion:

25.000 Martindale EN ISO 12947.

## Resistance to pilling:

4, ISO 12945-2.

## Fastness to rubbing:

Wet 4. Dry 4, ISO 105 X12.

\*Batch to batch variations may occur within commercial tolerances.

## Composición:

100% poliéster.

## Solidez a la luz:

4, EN ISO 105 B02.

## Abrasión:

25.000 Martindale EN ISO 12947.

## R. a la formación de pilling:

4, ISO 12945-2.

## Resistencia al rozamiento:

Húmedo 4. Seco 4, ISO 105 X12.

\*De tintada a tintada se pueden producir variaciones tolerables de color.

## Composition:

100% polyester.

## Solidité à la lumière:

4, EN ISO 105 B02.

## Abrasion:

25.000 Martindale EN ISO 12947.

## Résistance au pilling:

4, ISO 12945-2.

## Résistance aux frottements:

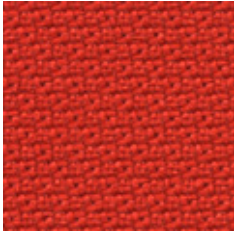
Sec 4. Humide 4, ISO 105 X12.

\*Des variations tolérables de coloris d'un bain à un autre peuvent se manifester.



# C4 – STEP

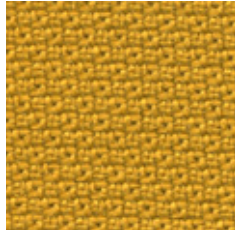
by **Gabriel**



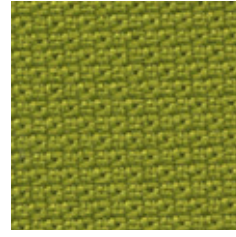
2440 - 63012



2440 - 61103



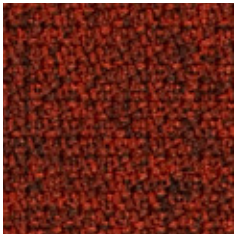
2440 - 62057



2440 - 68119



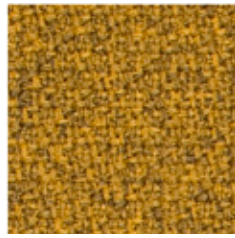
2440 - 68121



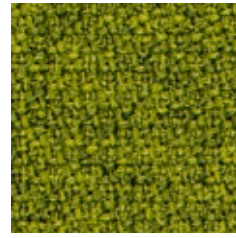
2442 - 63075



2442 - 61103



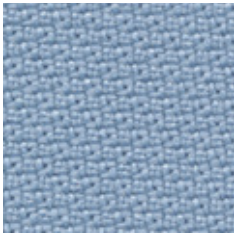
2442 - 62057



2442 - 68119



2442 - 68121



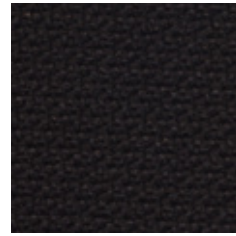
2440 - 67004



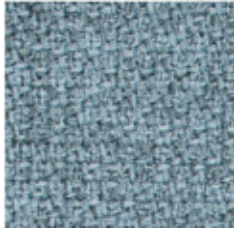
2440 - 65011



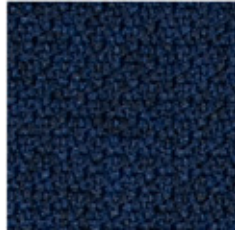
2440 - 66019



2440 - 60999



2442 - 67004



2442 - 65011



2442 - 66019



2442 - 60011



60° shrinkage max. 3%

WIDHT/ ANCHO/ LARGEUR: 140cm  
WEIHT/ PESO/ POID: 470gr/m<sup>2</sup>

## Composition:

100% trevira CS.

## Light fastness:

5 - 7, ISO 105 B02.

## Abrasion:

100.000 Martindale EN ISO 12947.

## Resistance to pilling:

4 - 5, ISO 12945-2.

## Fastness to rubbing:

Wet 4 - 5. Dry 4 - 5, ISO 105 X12.

## Flammability:

California Bulletin CAL 117-E-Class 1 • IMO MSC 307 (88) Annex 1 part 8 • MED Certificate IMO • DIN 4102 B1 • NFP 92-503/504/505 M1 • BS EN 1021 1&2 • BS 5852 Part 1 0,1 Cigarette & match • BS 5852 Crib 5 • Class Uno UNI 9175 Class 1 I EMME • ÖNORM B 3825-B1-3800-Q1 UK • FAR/JAR 25,853 (a) (i) (ii) • BS 7176 Medium Hazard • AM 18 - NF D 60-013 • Class Uno UNI 9175 Class 1 I EMME.

## Environment:

Oeko-Tex • EU Ecolabel • 100% free of heavy metals.

## Composición:

100% trevira CS.

## Solidez a la luz:

5 - 7, ISO 105 B02.

## Abrasión:

100.000 Martindale EN ISO 12947.

## R. a la formación de pilling:

4 - 5, ISO 12945-2.

## Resistencia al rozamiento:

Seco 4 - 5. Mojado 4 - 5, ISO 105 X12.

## Inflamabilidad:

California Bulletin CAL 117-E-Class 1 • IMO MSC 307 (88) Annex 1 part 8 • MED Certificate IMO • DIN 4102 B1 • NFP 92-503/504/505 M1 • BS EN 1021 1&2 • BS 5852 Part 1 0,1 Cigarette & match • BS 5852 Crib 5 • Class Uno UNI 9175 Class 1 I EMME • ÖNORM B 3825-B1-3800-Q1 UK • FAR/JAR 25,853 (a) (i) (ii) • BS 7176 Medium Hazard • AM 18 - NF D 60-013 • Class Uno UNI 9175 Class 1 I EMME.

## Medio ambiente:

Oeko-Tex • EU Ecolabel • 100% free of heavy metals.

## Composition:

100% trevira CS.

## Solidité à la lumière:

5 - 7, ISO 105 B02.

## Abrasion:

100.000 Martindale EN ISO 12947.

## Résistance au pilling:

4 - 5, ISO 12945-2.

## Résistance aux frottements:

Sec 4 - 5. Humide 4 - 5, ISO 105 X12.

## Inflamabilité:

California Bulletin CAL 117-E-Class 1 • IMO MSC 307 (88) Annex 1 part 8 • MED Certificate IMO • DIN 4102 B1 • NFP 92-503/504/505 M1 • BS EN 1021 1&2 • BS 5852 Part 1 0,1 Cigarette & match • BS 5852 Crib 5 • Class Uno UNI 9175 Class 1 I EMME • ÖNORM B 3825-B1-3800-Q1 UK • FAR/JAR 25,853 (a) (i) (ii) • BS 7176 Medium Hazard • AM 18 - NF D 60-013 • Class Uno UNI 9175 Class 1 I EMME.

## Environnement:

Oeko-Tex • EU Ecolabel • 100% free of heavy metals.



16





# C4 – ASPECT



31



15



17



18



14



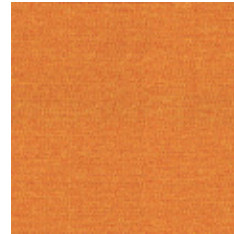
6



4



8



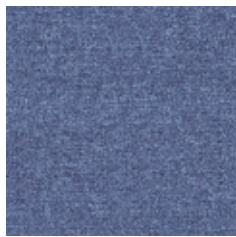
2



1



24



26



19



25



WIDHT/ ANCHO/ LARGEUR: 140cm  
WEIHT/ PESO/ POID: 325gr/m2

## Composition:

75% trevira, 25% polyester.

## Light fastness:

5, EN ISO 105 B02.

## Abrasion:

35.000 Martindale EN ISO 12947.

## Fastness to rubbing:

Wet 4, Dry 4, ISO 105 X12.

## Flammability:

BS EN 1021-1 • BS EN 1021-2 • BS 7176 Low Hazard • BS 7176 Medium Hazard • BS 5852 section 4 ignition source 5 • DIN 4102 B1 • UNI 9175 classe 1 IM • ÖNORM B 3825 & A 3800.

\*Batch to batch variations may occur within commercial tolerances.

## Composición:

75% trevira, 25% poliéster.

## Solidez a la luz:

5 - 7, EN ISO 105 B02.

## Abrasion:

35.000 Martindale EN ISO 12947.

## Resistencia al rozamiento:

Húmedo 4, Seco 4, ISO 105 X12.

## Inflamabilidad:

BS EN 1021-1 • BS EN 1021-2 • BS 7176 Low Hazard • BS 7176 Medium Hazard • BS 5852 section 4 ignition source 5 • DIN 4102 B1 • UNI 9175 classe 1 IM • ÖNORM B 3825 & A 3800.

\*De tintada a tintada se pueden producir variaciones tolerables de color.

## Composition:

75% trevira, 25% polyester.

## Solidité à la lumière:

5 - 7, EN ISO 105 B02.

## Abrasion:

35.000 Martindale EN ISO 12947.

## Résistance aux frottements:

Sec 4, Humide 4, ISO 105 X12.

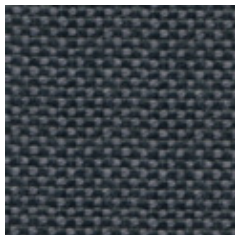
## Inflamabilité:

BS EN 1021-1 • BS EN 1021-2 • BS 7176 Low Hazard • BS 7176 Medium Hazard • BS 5852 section 4 ignition source 5 • DIN 4102 B1 • UNI 9175 classe 1 IM • ÖNORM B 3825 & A 3800.

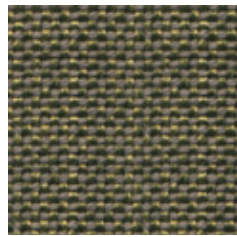
\*Des variations tolérables de coloris d'un bain à un autre peuvent se manifester.



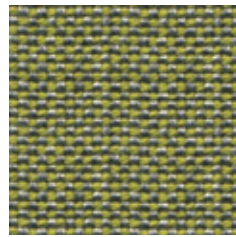
# C4 – FUSION



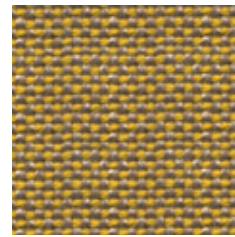
53



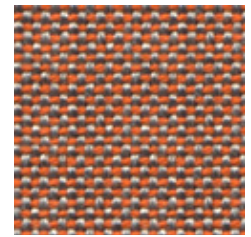
31



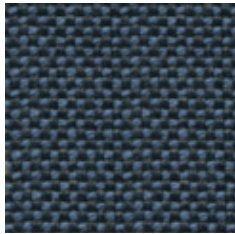
36



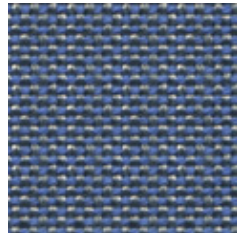
20



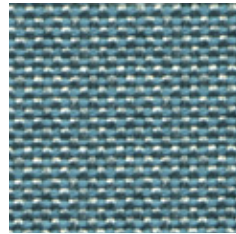
24



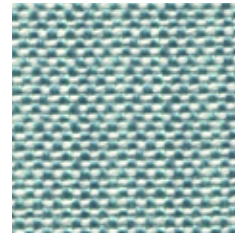
45



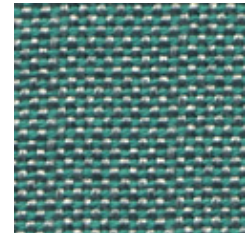
46



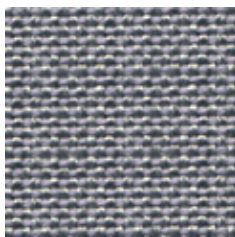
49



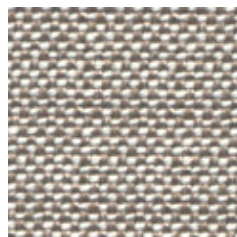
40



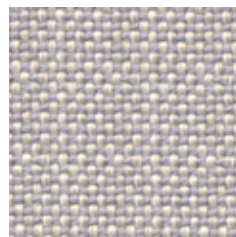
33



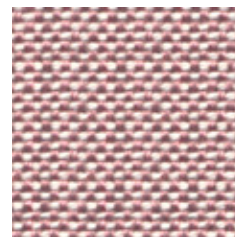
51



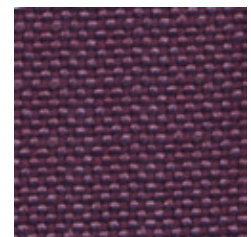
8



7



61



63



WIDHT/ ANCHO/ LARGEUR: 140cm  
WEIHT/ PESO/ POID: 750gr/m2

## Composition:

60% new wool, 40% polypropylene.

## Lightfastness:

5 - 6, ISO 105-B02.

## Abrasion:

62.000 Martindale EN ISO 12947 • 4-5, EN ISO 12947/2, EN 14465 / EN ISO 105-A02.

## Resistance to pilling:

4 - 5, EN ISO 12945/2.

## Fastness to rubbing:

Wet 4 - 5. Dry 4 - 5, ISO 105 X12.

## Flammability:

BS5852 O/1 • EN 1021 1/2 • BS7171 Low hazard • BS7176 Medium hazard • CAL TB I 17;sect I 2013 • NFPA 260:2013.

## Environment:

Oeko-Tex • ISO 14001 • 100% free of heavy metals.

\*Batch to batch variations may occur within commercial tolerances.

## Composición:

60% lana virgen, 40% polipropileno.

## Solidez a la luz:

5 - 6, ISO 105-B02.

## Abrasión:

62.000 Martindale EN ISO 12947 • 4-5, EN ISO 12947/2, EN 14465 / EN ISO 105-A02.

## Resistencia a la formación de pilling:

4 - 5, EN ISO 12945/2.

## Resistencia al rozamiento:

Húmedo 4 - 5. Seco 4 - 5, ISO 105 X12.

## Inflamabilidad:

BS5852 O/1 • EN 1021 1/2 • BS7171 Low hazard • BS7176 Medium hazard • CAL TB I 17;sect I 2013 • NFPA 260:2013.

## Medio ambiente:

Oeko-Tex • ISO 14001 • 100% libre de metales pesados.

\*De tintada a tintada se pueden producir variaciones tolerables de color.

## Composition:

60% laine, 40% polypropylène.

## Solidité à la lumière:

5 - 6, ISO 105-B02.

## Abrasion:

62.000 Martindale EN ISO 12947 • 4-5, EN ISO 12947/2, EN 14465 / EN ISO 105-A02.

## Résistance au pilling:

4 - 5, EN ISO 12945/2.

## Résistance aux frottements:

Sec 4 - 5. Humide 4 - 5, ISO 105 X12.

## Inflamabilité:

BS5852 O/1 • EN 1021 1/2 • BS7171 Low hazard • BS7176 Medium hazard • CAL TB I 17;sect I 2013 • NFPA 260:2013.

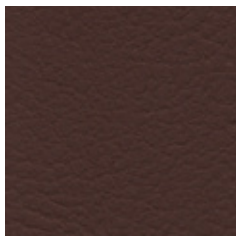
## Environnement:

Oeko-Tex • ISO 14001 • 100% free of heavy metals.

\*Des variations tolérables de coloris d'un bain à un autre peuvent se manifester.



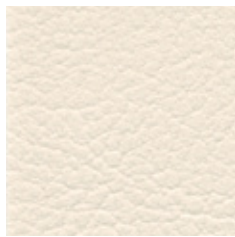
# C4 – VALENCIA



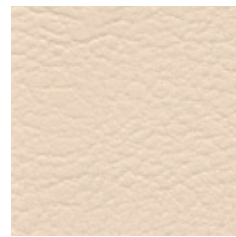
1



9001



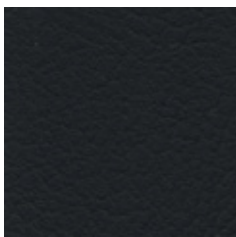
8032



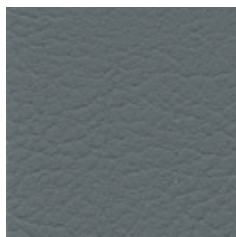
1048



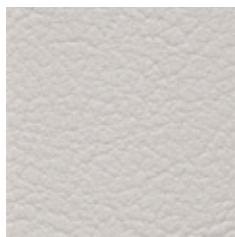
35



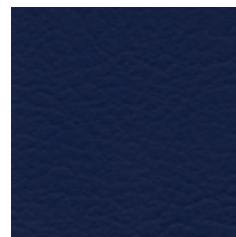
9035



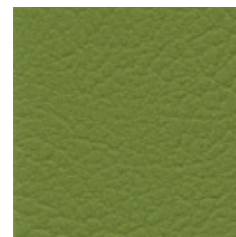
4043



4040



3068



5001



**WIDHT/ ANCHO/ LARGEUR:** 137cm  
**WEIHT/ PESO/ POID:** 650gr/m2

## Composition:

**Topcoat:** 100% vinyl. **Backing:** 100% polyester.

## Light fastness:

6, DIN 54004 1000 hours pasa.

## Abrasion:

300.000 Martindale EN ISO 12947.

## Characteristics:

Antimicrobial protection • Antibacterial protection • Antimycotic protection. • Resistance to spitting and respiration. Urine resistance. Blood resistance. • Waterproof. • Oil resistance (Sunflower oil).

## Flammability:

EN 1021 Part 1 & 2 • DIN 4102 B2 • UNI 9175 Classe 1.1 M • NF P 92-503 / M2 • UNE 23.727-90 IR/M.2 • MVSS302 • IMO A.652 (16)8.2 & 8.3.

\*Batch to catch variations may occur within commercial tolerances.

## Composición:

**Capa:** 100% vinyl. **Soporte:** 100% polyester.

## Solidez a la luz:

6, DIN 54004 1000 horas pasa.

## Abrasión:

300.000 Martindale EN ISO 12947.

## Características:

Protección antimicrobiana • Protección antibacteriana • Protección antimicótica. • Resistencia a la transpiración, a la saliva humana, orina, sangre, aceites de girasol. • Impermeabilidad.

## Inflamabilidad:

EN 1021 Part 1 & 2 • DIN 4102 B2 • UNI 9175 Classe 1.1 M • NF P 92-503 / M2 • UNE 23.727-90 IR/M.2 • MVSS302 • IMO A.652 (16)8.2 & 8.3.

\*De tintada a tintada se pueden producir variaciones tolerables de color.

## Composition:

**Face enduction:** 100% vinyl. **Soporte:** 100% polyester.

## Solidité à la lumière:

6, DIN 54004 1000 heures pasa

## Abrasion:

300.000 Martindale EN ISO 12947.

## Caracteristiques:

Protection antimicrobienne • Protection antibactérienne • Protection antimycosique. • Résistance à la transpiration et à la salive, à l'urine, au sang, à l'huile tourmesol. • Imperméable.

## Inflamabilité:

EN 1021 Part 1 & 2 • DIN 4102 B2 • UNI 9175 Classe 1.1 M • NF P 92-503 / M2 • UNE 23.727-90 IR/M.2 • MVSS302 • IMO A.652 (16)8.2 & 8.3.

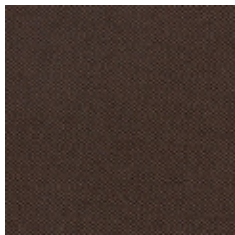
\*Des cariations tolérables de coloris d'un bain à un autre peuvent se manifester.



Anti stain

**PERMABLOK<sup>3</sup>**  
ADVANCED VINYL PROTECTION

# C4 – SILVER



5



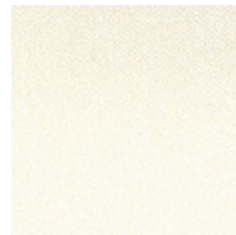
4024



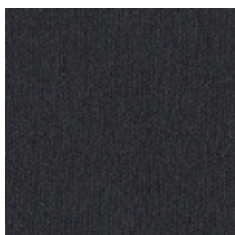
9



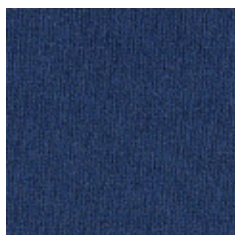
1010



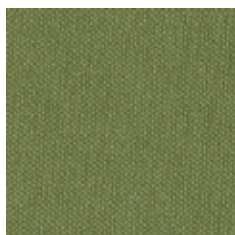
1077



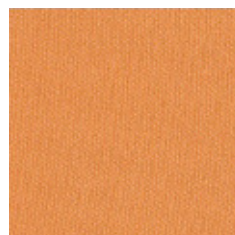
9002



3007



5020



6062



4001



2016



**WIDHT/ ANCHO/ LARGEUR:** 137cm  
**WEIHT/ PESO/ POID:** 685gr/m<sup>2</sup>

## Composition:

**Topcoat:** 100% vinyl. **Backing:** 100% polyester.

## Light fastness:

7 - 8, DIN 54004 1000 hours pasa.

## Abrasion:

300.000 Martindale EN ISO 12947.

## Characteristics:

Antimicrobial protection • Antibacterial protection • Resistance to spitting and respiration. Urine resistance. Blood resistance. • Waterproof. • Oil resistance (Sunflower oil).

## Flammability:

NF P 92-506 / M2 • EN 1021, Part 1 & 2 • DIN 4102 B2 • ÖNORM B 3825, Gruppe 1 - Schwerbrennbares Verhalten • ÖNORM A 3800, Teil 1, Qualmbildungsklasse Q1 -schwachqualmend • IMO A 652 (16) Annex 1, 8,2 and 8,3 • (MED) Council Directive 96/98 EC on marine equipment • UNI 9175 (1987) / UNI 9175/FAI (1994) Classe 1. IM (uno I EMME) • UNE 23.727-90 IR/ M2 • EN 71-2: 2006 + A1:2007 Safety of Toys - Part 2: Flammability • Directive 95/28/CE • FMVSS 302 • FAR 25/853.

\*Order to order variations may occur within commercial tolerances.

## Composición:

**Capa:** 100% vinyl. **Soporte:** 100% polyester.

## Solidez a la luz:

7 - 8, DIN 54004 1000 horas pasa.

## Abrasion:

300.000 Martindale EN ISO 12947.

## Características:

Protección antimicrobiana • Protección antibacteriana • Protección antimicótica. • Resistencia a la transpiración, a la saliba humana, orina, sangre, aceites de girasol. • Impermeabilidad.

## Inflamabilidad:

NF P 92-506 / M2 • EN 1021, Part 1 & 2 • DIN 4102 B2 • ÖNORM B 3825, Gruppe 1 - Schwerbrennbares Verhalten • ÖNORM A 3800, Teil 1, Qualmbildungsklasse Q1 -schwachqualmend • IMO A 652 (16) Annex 1, 8,2 and 8,3 • (MED) Council Directive 96/98 EC on marine equipment • UNI 9175 (1987) / UNI 9175/FAI (1994) Classe 1. IM (uno I EMME) • UNE 23.727-90 IR/ M2 • EN 71-2: 2006 + A1:2007 Safety of Toys - Part 2: Flammability • Directive 95/28/CE • FMVSS 302 • FAR 25/853.

\*De una partida a otra se pueden producir variaciones tolerables de color.

## Composition:

**Face enduction:** 100% vinyl. **Soporte:** 100% polyester.

## Solidité à la lumière:

7 - 8, DIN 54004 1000 heures pasa

## Abrasion:

300.000 Martindale EN ISO 12947.

## Caracteristiques:

Protection antimicrobienne • Protection antibactérienne • Protection antimycosique. • Résistance à la transpiration et à la salive, à l'urine, au sang, à l'huile tourmesol. • Imperméable.

## Inflamabilité:

NF P 92-506 / M2 • EN 1021, Part 1 & 2 • DIN 4102 B2 • ÖNORM B 3825, Gruppe 1 - Schwerbrennbares Verhalten • ÖNORM A 3800, Teil 1, Qualmbildungsklasse Q1 -schwachqualmend • IMO A 652 (16) Annex 1, 8,2 and 8,3 • (MED) Council Directive 96/98 EC on marine equipment • UNI 9175 (1987) / UNI 9175/FAI (1994) Classe 1. IM (uno I EMME) • UNE 23.727-90 IR/ M2 • EN 71-2: 2006 + A1:2007 Safety of Toys - Part 2: Flammability • Directive 95/28/CE • FMVSS 302 • FAR 25/853.

\*Des variations tolérables de coloris d'une serie à un autre peuvent se manifester.



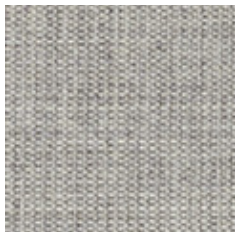
Anti stain

PERMABLOK<sup>3</sup>  
ADVANCED VINYL PROTECTION



# C5 – CANVAS

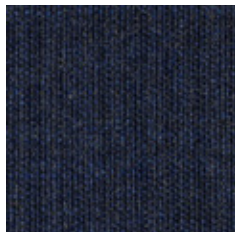
by **kvadrat**



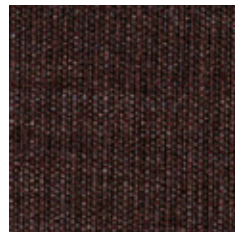
124



174



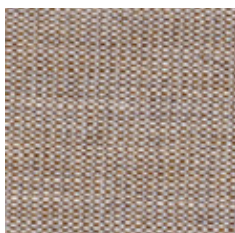
794



364



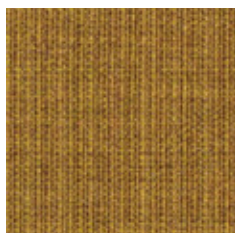
684



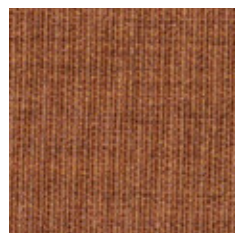
244



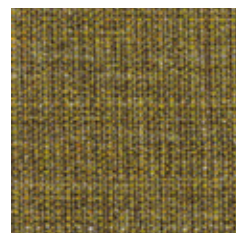
264



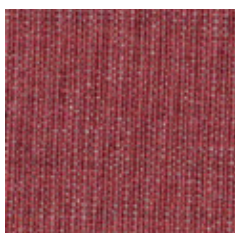
424



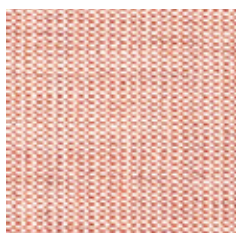
454



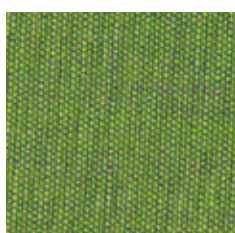
964



654



614



954



**WIDHT/ ANCHO/ LARGEUR:** 140cm.  
**WEIHT/ PESO/ POID:** 480gr/m2

**Designer:**

Giulio Ridolfo.

**Composition:**

90% new wool, 10% nylon.

**Lightfastness:**

5 - 7, ISO 105-B02.

**Abrasion:**

100.000 Martindale EN ISO 12947.

**Resistance to pilling:**

4 - 5, EN ISO 12945.

**Fire test:**

EN 1021-1/2 • BS 5852 part 1 • BS 5852, ignition source 2-3 • DIN 4102 B2 • Önorm B1/Q1 • NF D 60 013 • UNI 9175 1IM • US cal. Tech. Bull. 117 • IMO A.652(16).

**Environment:**

Complies with EU ecolabel "The Flower" • 100% free of heavy metals.

\*Batch to batch variations may occur within commercial tolerances.

**Diseñador:**

Giulio Ridolfo.

**Composición:**

90% lana virgen, 10% nylon.

**Solidez a la luz:**

5 - 7, ISO 105-B02.

**Abrasión:**

100.000 Martindale EN ISO 12947.

**Resistencia a la formación de pilling:**

4 - 5, EN ISO 12945.

**Test de resistencia al fuego:**

EN 1021-1/2 • BS 5852 part 1 • BS 5852, ignition source 2-3 • DIN 4102 B2 • Önorm B1/Q1 • NF D 60 013 • UNI 9175 1IM • US cal. Tech. Bull. 117 • IMO A.652(16).

**Medio ambiente:**

Cumple con la ecolabel de la UE "The Flower" • 100% libre de metales pesados.

\*De tintada a tintada se pueden producir variaciones tolerables de color.

**Créateur:**

Giulio Ridolfo.

**Composition:**

90% laine, 10% nylon.

**Solidité à la lumière:**

5 - 7, ISO 105-B02.

**Abrasion:**

100.000 Martindale EN ISO 12947.

**Résistance au pilling:**

4 - 5, EN ISO 12945.

**Résistance au feu:**

EN 1021-1/2 • BS 5852 part 1 • BS 5852, ignition source 2-3 • DIN 4102 B2 • Önorm B1/Q1 • NF D 60 013 • UNI 9175 1IM • US cal. Tech. Bull. 117 • IMO A.652(16).

**Environnement:**

UE ecolabel "The Flower" • 100% free of heavy metals.

\*Des variations tolérables de coloris d'un bain à un autre peuvent se manifester.



# C5 – REMIX 2

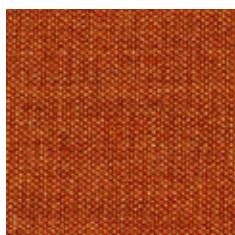
by **kvadrat**



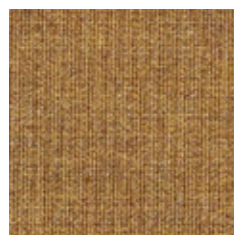
662



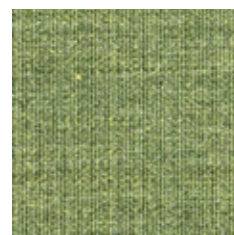
653



443



433



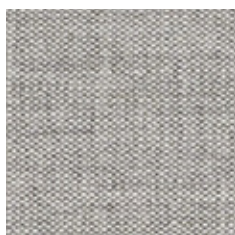
933



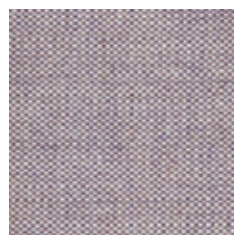
954



233



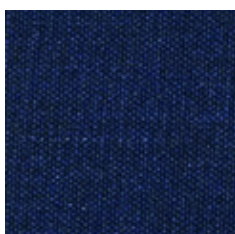
123



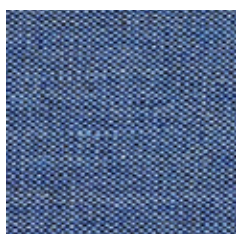
682



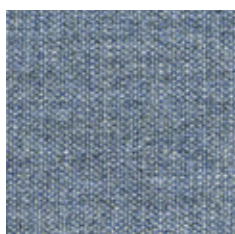
223



773



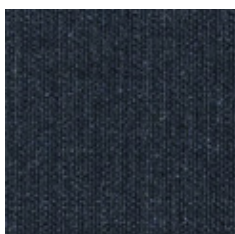
743



733



823



183



163



143



**WIDHT/ ANCHO/ LARGEUR:** 138cm  
**WEIHT/ PESO/ POID:** 415gr/m2

## Designer:

Giulio Ridolfo.

## Composition:

90% new wool, 10% nylon.

## Lightfastness:

5 - 7 ISO 105-B02.

## Abrasion:

100.000 Martindale EN ISO 12947.

## Resistance to pilling:

3 - 4, EN ISO 12945.

## Fire test:

EN 1021-1/2 • BS 5852, ignition source 2-3 • Önorm B1/Q1 • NF D 60 013 • UNI 9175, 11M • AS/NZS 3837 class 2 • Cal. Tech. Bull. 117, Sec. E • IMO A.652(16).

## Environment:

Complies with EU ecolabel "The Flower" • 100% free of heavy metals.

\*Batch to catch variations may occur within commercial tolerances.

## Diseñador:

Giulio Ridolfo.

## Composición:

90% lana virgen, 10% nylon.

## Solidez a la luz:

5 - 7 ISO 105-B02.

## Abrasión:

100.000 Martindale EN ISO 12947.

## Resistencia a la formación de pilling:

3 - 4, EN ISO 12945.

## Test de resistencia al fuego:

EN 1021-1/2 • BS 5852, ignition source 2-3 • Önorm B1/Q1 • NF D 60 013 • UNI 9175, 11M • AS/NZS 3837 class 2 • Cal. Tech. Bull. 117, Sec. E • IMO A.652(16).

## Medio ambiente:

Cumple con la ecolabel de la UE "The Flower" • 100% libre de metales pesados.

\*De tintada a tintada se pueden producir variaciones tolerables de color.

## Créateur:

Giulio Ridolfo.

## Composition:

90% laine, 10% nylon.

## Solidité à la lumière:

5 - 7 ISO 105-B02.

## Abrasion:

100.000 Martindale EN ISO 12947.

## Résistance au pilling:

3 - 4, EN ISO 12945.

## Test de résistance al fuego:

EN 1021-1/2 • BS 5852, ignition source 2-3 • Önorm B1/Q1 • NF D 60 013 • UNI 9175, 11M • AS/NZS 3837 class 2 • Cal. Tech. Bull. 117, Sec. E • IMO A.652(16).

## Environnement:

UE ecolabel "The Flower" • 100% free of heavy metals.

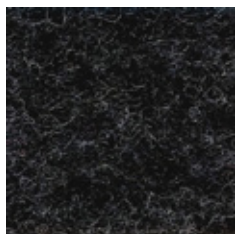
\*Des variations tolérables de coloris d'un bain à un autre peuvent se manifester.



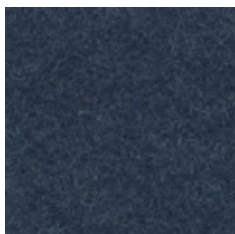
# C5 – LUNA/EUROPOST



LUNA 4502



LUNA 4011



LUNA 4703



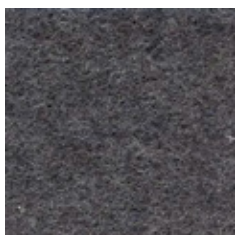
LUNA 4605



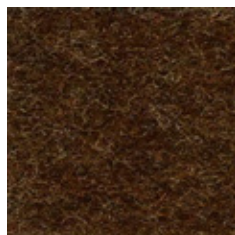
EUROPOST 66118



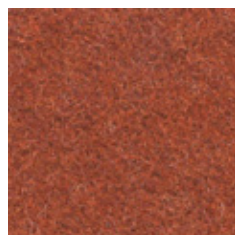
LUNA 4009



LUNA 4010



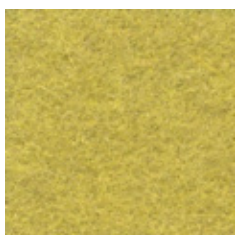
LUNA 4111



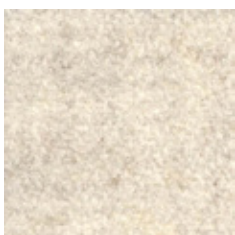
LUNA 4301



EUROPOST 63073



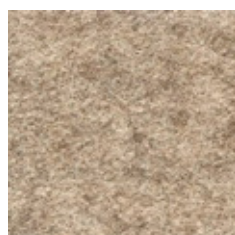
LUNA 4204



LUNA 4006



EUROPOST 61107



LUNA 4101



EUROPOST 61004



WIDHT/ ANCHO/ LARGEUR: 140cm  
WEIHT/ PESO/ POID: Luna 680gr/m2. Europost 800gr/m2

## Composition:

Luna 90% wool, 10% polyamide

Europost 100% wool

## Light fastness:

5 - 6, EN ISO 105-B02.

## Abrasion resistance:

Luna 70.000 Martindale EN ISO 12947-2.

Europost 50.000 Martindale EN ISO 12947-2.

## Resistance to Pilling:

Luna 3 - 4, EN ISO 12945-2.

Europost 5, EN ISO 12945-2.

## Dye fastness to rubbing:

Wet 4 - 5. Dry 4 - 5, EN ISO 105x12.

## Flammability:

UNE EN ISO 10211 & 2 • BS 5852 o&1 • BS5852 scrib 5 • DIN 4102:B2 • NFP 92-503: M2 • IMO Res. A652 (16) • FAR 25.852 (b).

## Environment:

Oeko-Tex • EU Ecolabel • 100% free of heavy metals.

\*Batch to batch variations may occur within commercial tolerances.

## Composición:

Luna 90% lana, 10% poliamida

Europost 100% lana

## Solidez a la luz:

5 - 6, EN ISO 105-B02.

## Resistencia a la abrasión:

Luna 70.000 Martindale EN ISO 12947-2.

Europost 50.000 Martindale EN ISO 12947-2.

## R. a la formación de Pilling:

Luna 3 - 4, EN ISO 12945-2.

Europost 5, EN ISO 12945-2.

## Solidez de las tinturas al frote:

Seco 4 - 5. Mojado 4 - 5, EN ISO 105x12.

## Inflamabilidad:

UNE EN ISO 10211 & 2 • BS 5852 o&1 • BS5852 scrib 5 • DIN 4102:B2 • NFP 92-503: M2 • IMO Res. A652 (16) • FAR 25.852 (b).

## Medio ambiente:

Oeko-Tex • EU Ecolabel • 100% free of heavy metals.

\*De tintada a tintada se pueden producir variaciones tolerables de color.

## Composición:

Luna 90% laine, 10% polyamide

Europost 100% laine

## Solidité a la lumière:

5 - 6, EN ISO 105-B02.

## Résistance à l'abrasion:

Luna 70.000 Martindale EN ISO 12947-2.

Europost 50.000 Martindale EN ISO 12947-2.

## Résistance au Pilling:

Luna 3 - 4, EN ISO 12945-2.

Europost 5, EN ISO 12945-2.

## Résistance au frottement:

Sec 4 - 5. Humide 4 - 5, EN ISO 105x12.

## Inflamabilité:

UNE EN ISO 10211 & 2 • BS 5852 o&1 • BS5852 scrib 5 • DIN 4102:B2 • NFP 92-503: M2 • IMO Res. A652 (16) • FAR 25.852 (b).

## Environnement:

Oeko-Tex • EU Ecolabel • 100% free of heavy metals.

\*Des variations tolérables de coloris d'un bain à un autre peuvent se manifester.



# C6 – STEEL CUT TRIO 2

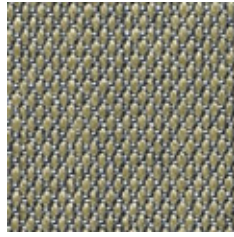
by **kvadrat**



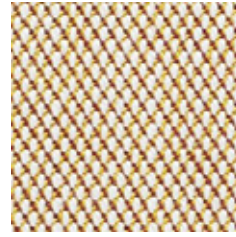
133



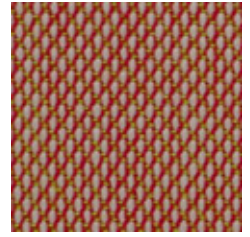
205



253



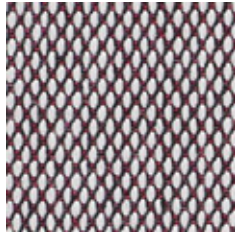
413



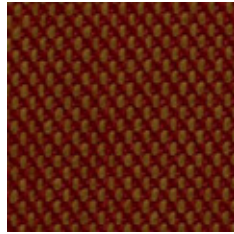
515



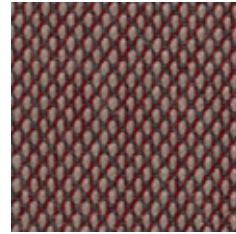
124



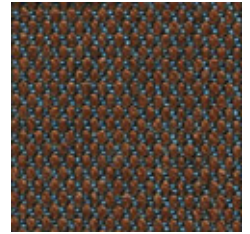
144



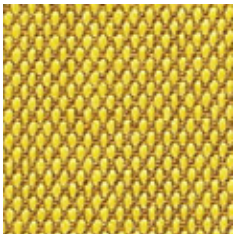
565



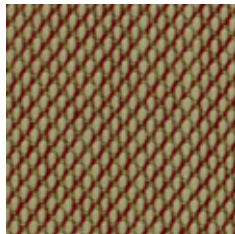
645



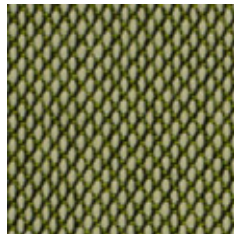
353



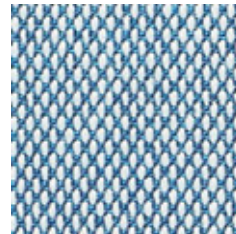
453



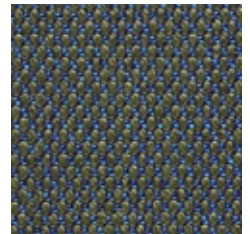
415



915



733



883



**WIDHT/ ANCHO/ LARGEUR:** 140cm.  
**WEIHT/ PESO/ POID:** 770gr/m2

## Designer:

Frans Dijkmeijer and Giulio Ridolfo.

## Composition:

90% new wool, 10% nylon.

## Lightfastness:

5-7 ISO 105-B02.

## Abrasion:

100.000 Martindale EN ISO 12947.

## Resistance to pilling:

3-4, EN ISO 12945.

## Fire test:

EN 1021-1/2 • BS 5852, ignition source 2 - 3 • DIN 4102 B2 • Önorm B1/Q1 • NF D 60 013 • Italian Class 1IM • US Cal. Tech. Bull. 117, Sec. E • IMO A. 652(16).

## Environment:

Complies with EU ecolabel "The Flower".

\*Batch to batch variations may occur within commercial tolerances.

## Diseñador:

Frans Dijkmeijer and Giulio Ridolfo.

## Composición:

90% lana virgen, 10% nylon.

## Solidez a la luz:

5-7 ISO 105-B02.

## Abrasión:

100.000 Martindale EN ISO 12947.

## Resistencia a la formación de pilling:

3-4, EN ISO 12945.

## Test de resistencia al fuego:

EN 1021-1/2 • BS 5852, ignition source 2 - 3 • DIN 4102 B2 • Önorm B1/Q1 • NF D 60 013 • Italian Class 1IM • US Cal. Tech. Bull. 117, Sec. E • IMO A. 652(16).

## Medio ambiente:

Cumple con la ecolabel de la UE "The Flower".

\*De tintada a tintada se pueden producir variaciones tolerables de color.

## Créateur:

Frans Dijkmeijer and Giulio Ridolfo.

## Composition:

90% laine, 10% nylon.

## Solidité à la lumière:

5 - 7 ISO 105-B02

## Abrasion:

100.000 Martindale EN ISO 12947.

## Résistance au pilling:

3 - 4, EN ISO 12945.

## Résistance au feu:

EN 1021-1/2 • BS 5852, ignition source 2 - 3 • DIN 4102 B2 • Önorm B1/Q1 • NF D 60 013 • Italian Class 1IM • US Cal. Tech. Bull. 117, Sec. E • IMO A. 652(16).

## Environnement:

UE ecolabel "The Flower".

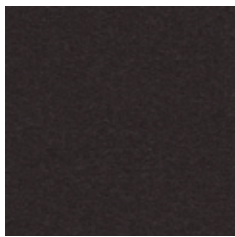
\*Des variations tolérables de coloris d'un bain à un autre peuvent se manifester.



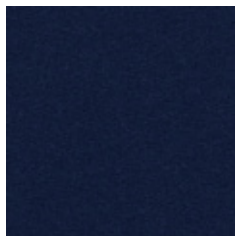


# C6 – HERO

by **kvadrat**



191



791



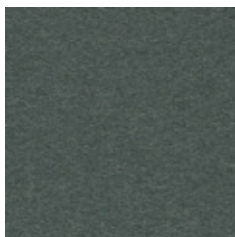
711



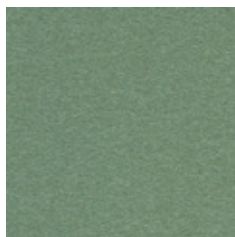
701



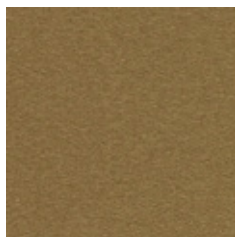
101



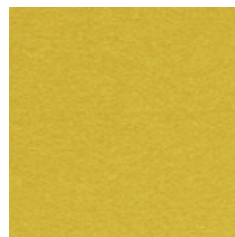
991



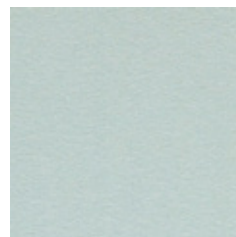
931



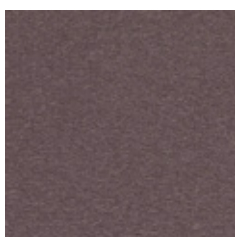
981



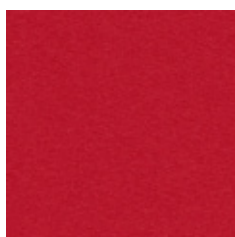
441



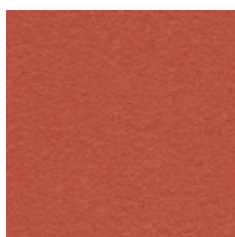
901



381



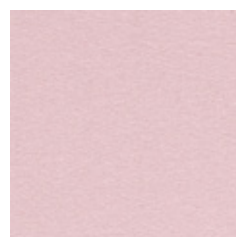
681



541



451



601



WIDHT/ ANCHO/ LARGEUR: 140cm.  
WEIHT/ PESO/ POID: 580gr/m2

## Designer:

Patricia Urquiola.

## Composition:

96% new wool, 4% nylon.

## Lightfastness:

5 - 6 ISO 105-B02.

## Abrasion:

45.000 Martindale EN ISO 12947.

## Resistance to pilling:

3 - 4, EN ISO 12945.

## Fire test:

EN 1021-1/2 • DIN 4102 B2 • NF D 60 013 •  
UNI 9175 1IM • US Cal. Bull. 117-2013 • NFPA  
260 • IMO A.652 (16).

\*Batch to batch variations may occur within commercial tolerances.

## Diseñador:

Patricia Urquiola.

## Composición:

96% lana virgen, 4% nylon.

## Solidez a la luz:

5 - 6 ISO 105-B02.

## Abrasión:

45.000 Martindale EN ISO 12947.

## Resistencia a la formación de pilling:

3 - 4, EN ISO 12945.

## Test de resistencia al fuego:

EN 1021-1/2 • BS 5852, ignition source 2 - 3 •  
DIN 4102 B2 • Önorm B1/Q1 • NF D 60 013 •  
Italian Class 1|M • US Cal. Tech. Bull. 117, Sec.  
E • IMO A. 652(16).

\*De tintada a tintada se pueden producir variaciones tolerables de color.

## Créateur:

Patricia Urquiola.

## Composition:

96% laine, 4% nylon.

## Solidité à la lumière:

5 - 6 ISO 105-B02.

## Abrasion:

45.000 Martindale EN ISO 12947.

## Résistance au pilling:

3 - 4, EN ISO 12945.

## Résistance au feu:

EN 1021-1/2 • BS 5852, ignition source 2 - 3 •  
DIN 4102 B2 • Önorm B1/Q1 • NF D 60 013 •  
Italian Class 1|M • US Cal. Tech. Bull. 117, Sec.  
E • IMO A. 652(16).

\*Des variations tolérables de coloris d'un bain à un autre peuvent se manifester.

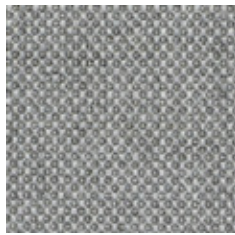


# C6 – FIORD

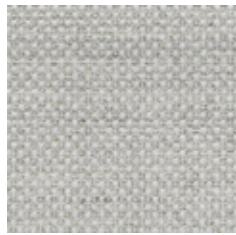
by kvadrat



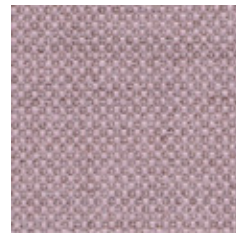
191



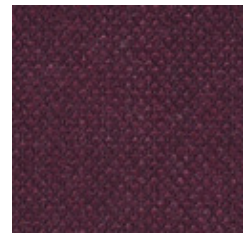
151



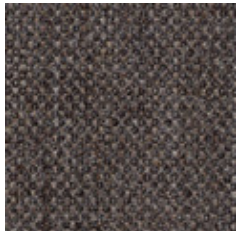
121



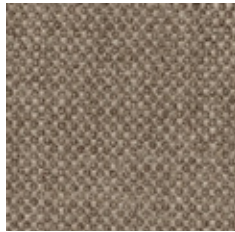
551



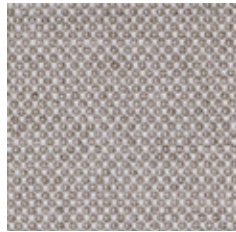
591



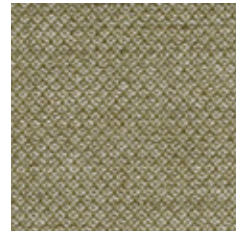
371



271



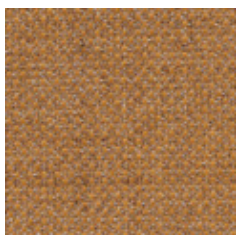
251



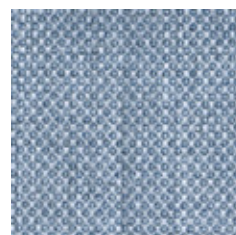
951



961



451



751



771



WIDHT/ ANCHO/ LARGEUR: 140cm.  
WEIHT/ PESO/ POID: 500gr/m2

## Designer:

Louise Sigvardt & Tone Barnung.

## Composition:

92% new wool, 8% nylon.

## Lightfastness:

5 - 6 ISO 105-B02.

## Abrasion:

60.000 Martindale EN ISO 12947.

## Resistance to pilling:

4 - 5, EN ISO 12945.

Fire test: BS 5852 part 1 • DIN 4102 B2 • EN 1021-1/2 • IMO FTP Code 2010 Part 8 • NF D 60 013 • UNI 9175 11M • US Cal. Bull. 117-2013.

## Environment:

Complies with EU ecolabel "The Flower".

\*Batch to catch variations may occur within commercial tolerances.

## Diseñador:

Louise Sigvardt & Tone Barnung.

## Composición:

92% lana virgen, 8% nylon.

## Solidez a la luz:

5 - 6 ISO 105-B02.

## Abrasión:

60.000 Martindale EN ISO 12947.

## Resistencia a la formación de pilling:

4 - 5, EN ISO 12945.

## Test de resistencia al fuego:

BS 5852 part 1 • DIN 4102 B2 • EN 1021-1/2 • IMO FTP Code 2010 Part 8 • NF D 60 013 • UNI 9175 11M • US Cal. Bull. 117-2013.

## Medio ambiente:

Cumple con la ecolabel de la UE "The Flower".

\*De tintada a tintada se pueden producir variaciones tolerables de color.

## Créateur:

Louise Sigvardt & Tone Barnung.

## Composition:

92% laine, 8% nylon.

## Solidité à la lumière:

5 - 6 ISO 105-B02

## Abrasion:

60.000 Martindale EN ISO 12947.

## Résistance au pilling:

4 - 5, EN ISO 12945.

## Résistance au feu:

BS 5852 part 1 • DIN 4102 B2 • EN 1021-1/2 • IMO FTP Code 2010 Part 8 • NF D 60 013 • UNI 9175 11M • US Cal. Bull. 117-2013.

## Environnement:

UE ecolabel "The Flower".

\*Des variations tolérables de coloris d'un bain à un autre peuvent se manifester.



# C10 – PIEL



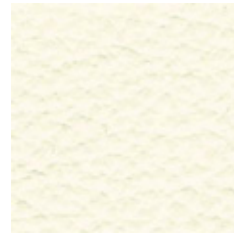
4



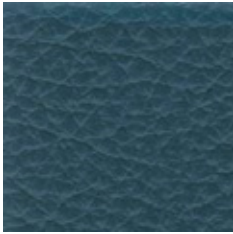
3



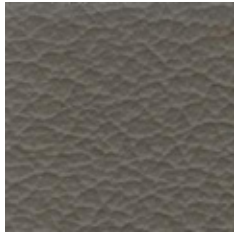
1



7



9



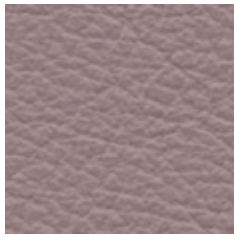
8



19



18



15

**Maintenance:** Wash with neutral soap and water or with a cleaning product for leather.

**Mantenimiento:** La limpieza de la piel debe hacerse con agua y jabón neutro, o productos aptos para la piel.

**Nettoyage:** Le nettoyage de la peau doit se faire avec du savon neutre et de l'eau, ou avec des produits pour la peau.

**Composition:**

Cow leather.

**Light fastness:**

5, DIN 50004.

**Fastness to rubbing:**

Wet 250C. Dry 1000C DIN 53339.

**Tear strength:**

>20N EN DIN 53329.

**Determination of PH:**

>3,5N, DIN 53312.

**Thickness:**

0,9 - 1,1mm

\*Batch to batch variations may occur within commercial tolerances.

**Composición:**

Piel bovina.

**Solidez a la luz:**

5, DIN 50004.

**Resistencia al rozamiento:**

Húmedo 250C. Seco 1000C DIN 53339.

**Resistencia a los desgarros:**

>20N, EN DIN 53329.

**PH del extracto acuoso:**

>3,5N, DIN 53312.

**Espesor:**

0,9 - 1,1mm

\*De tintada a tintada se pueden producir variaciones tolerables de color.

**Composition:**

Peau de bovin.

**Solidité à la lumière:**

5, DIN 50004.

**Résistance aux frottements:**

Humide 250C. Sec 1000C DIN 53339.

**Résistance à la déchirure:**

>20N EN DIN 53329.

**Détermination du PH:**

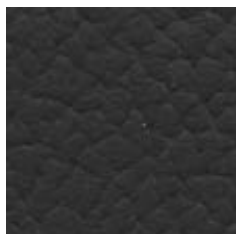
>3,5N, DIN 53312.

**Epaisseur:**

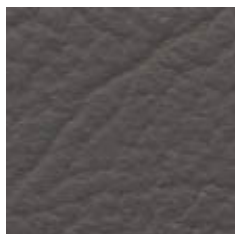
0,9 - 1,1mm

\*Des variations tolérables de coloris d'un bain à un autre peuvent se manifester.

# C11 – PIEL



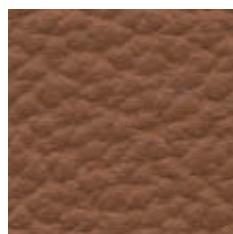
28



22



26



20



24

**Maintenance:** Wash with neutral soap and water or with a cleaning product for leather.

**Mantenimiento:** La limpieza de la piel debe hacerse con agua y jabón neutro, o productos aptos para la piel.

**Nettoyage:** Le nettoyage de la peau doit se faire avec du savon neutre et de l'eau, ou avec des produits pour la peau.

**Composition:**

Cow leather.

**Light fastness:**

5, DIN 50004.

**Fastness to rubbing:**

Wet 250C. Dry 1000C DIN 53339.

**Tear strength:**

>20N EN DIN 53329.

**Determination of PH:**

>3,5N, DIN 53312.

**Thickness:**

0,8 - 1,1mm

\*Batch to batch variations may occur within commercial tolerances.

**Composición:**

Piel bovina.

**Solidez a la luz:**

5, DIN 50004.

**Resistencia al rozamiento:**

Húmedo 250C. Seco 1000C DIN 53339.

**Resistencia a los desgarros:**

>20N, EN DIN 53329.

**PH del extracto acuoso:**

>3,5N, DIN 53312.

**Espesor:**

0,8 - 1,1mm

\*De tintada a tintada se pueden producir variaciones tolerables de color.

**Composition:**

Peau de bovin.

**Solidité à la lumière:**

5, DIN 50004.

**Résistance aux frottements:**

Humide 250C. Sec 1000C DIN 53339.

**Résistance à la déchirure:**

>20N EN DIN 53329.

**Détermination du PH:**

>3,5N, DIN 53312.

**Epaisseur:**

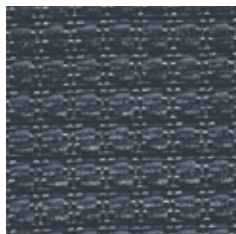
0,8 - 1,1mm

\*Des variations tolérables de coloris d'un bain à un autre peuvent se manifester.

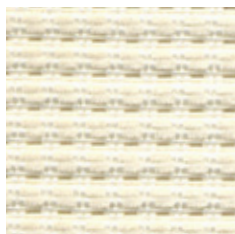
# MESH



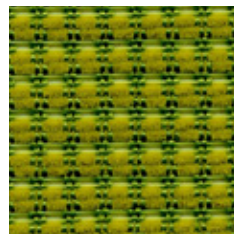
Black



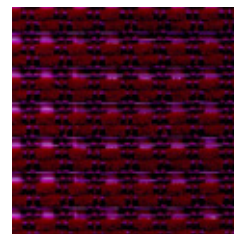
Grey



White



Green



Lilac



## Composition:

55% PL - 45% PA

## Light fastness:

(Blue scale) - Xenotest -  
UNI EN ISO 105-B02

Tolerance from 5 to 8 - Declared 6

## Abrasion resistance (rubs):

Martindale - UNI EN ISO 12947-2

>100.000 - Tolerance +-10%

## Flammability:

EN 1021/1

\*Flammability performance is dependent on foam and glue used.

\*Batch to batch variations may occur within commercial tolerances.

## Composición:

55% PL - 45% PA

## Solidez a la luz:

(Escala de azules) - Xenotest -  
UNI EN ISO 105-B02

Tolerancia de 5 a 8 - Admitida a 6

## Resistencia a la abrasión:

Martindale - UNI EN ISO 12947-2

> 100.000 ciclos - Tolerancia +-10%

## Inflamabilidad:

UNE EN 1021/1

\*Condiciones ignífugas dependientes del tipo de foam y cola utilizados.

\*De tintada a tintada se pueden producir variaciones tolerables de color.

## Composition:

55% PL - 45% PA

## Solidité à la lumière:

(Échelle des bleu) - Xenotest -  
UNI EN ISO 105-B02

Tolérance de 5 à 8 - Déclaré 6

## Résistance à l'abrasion (tours):

Martindale UNI EN ISO 12947-2

>100.000 cycles - Tolérance +-10%

## Inflamabilité:

UNE EN 1021/1

\*La réaction au feu dépend de la mousse et de la colle utilisées.

\*Des variations tolérables de coloris d'un bain à un autre peuvent se manifester.

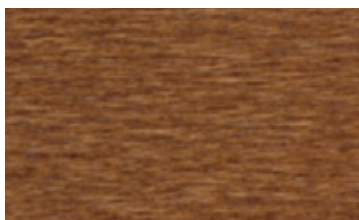
# WOOD FINISHINGS

acabados de madera / bois finitions

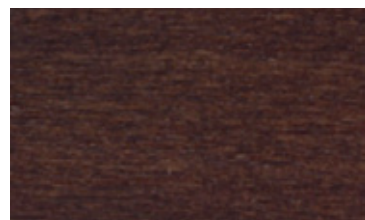
## BEECH VENEER / CHAPA DE HAYA / PLACAGE HÊTRE



NATURAL / NATURAL / NATUREL

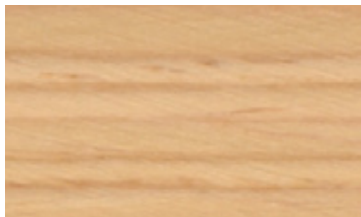


WALNUT / NOGAL / NOYER

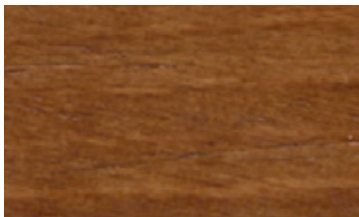


WENGE / WENGUÉ / WENGE

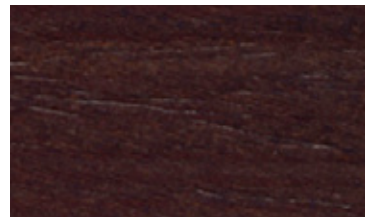
## OAK VENEER / CHAPA DE ROBLE / PLACAGE CHÊNE



NATURAL / NATURAL / NATUREL

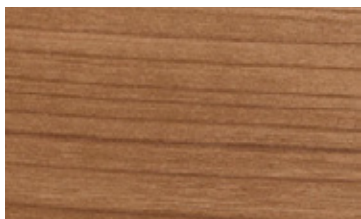


WALNUT / NOGAL / NOYER



WENGE / WENGUÉ / WENGE

## WALNUT VENEER / CHAPA DE NOGAL / PLACAGE NOYER

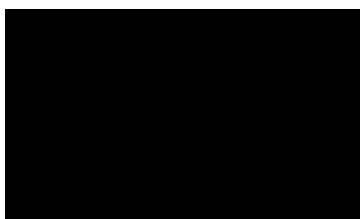


NATURAL / NATURAL / NATUREL

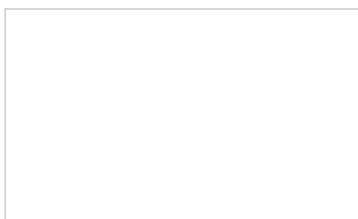
# WOOD FINISHINGS

acabados de madera / bois finitions

## LACQUERED MDF / MDF LACADO / MDF LAQUÉ



BLACK / NEGRO / NOIR  
Standard Colour



WHITE / BLANCO / BLANC  
Standard Colour



BROWN / MARRÓN / MARRON  
RAL 7006 - Optional Colour



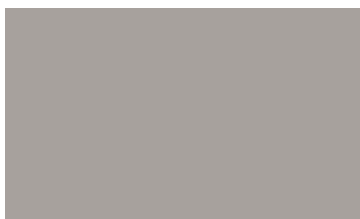
ANTHRACITE / ANTRACITA / ANTHRACITE  
RAL 7043 - Optional Colour



RED / ROJO / ROUGE  
RAL 3011 - Optional Colour



VISON / VISÓN / VISON  
RAL 1019 - Optional Colour



GREY / GRIS / GRIS  
RAL 7036 - Optional Colour



GREEN / VERDE / VERT  
RAL 6003 - Optional Colour



MUSTARD / MOSTAZA / MOUTARDE  
RAL 1032 - Optional Colour

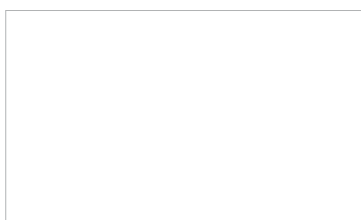
# METAL FINISHINGS

acabados metálicos / finitions métalliques

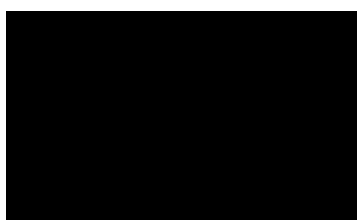


CHROME / CROMO / CHROMÉ

## STANDARD COLOURS / COLORES ESTÁNDAR / COULEURS STANDARDS



WHITE / BLANCO / BLANC



BLACK / NEGRO / NOIR



ALUMINUM / ALUMINIO / ALUMINIUM  
RAL 9006

## OPTIONAL COLOURS / COLORES OPCIONALES / COULEURS OPTIONNELLES



VISON / VISÓN / VISON  
RAL 1019



GREY / GRIS / GRIS  
RAL 7036



ANTHRACITE / ANTRACITA / ANTHRACITE  
RAL 7043



MUSTARD / MOSTAZA / MOUTARDE  
RAL 1032



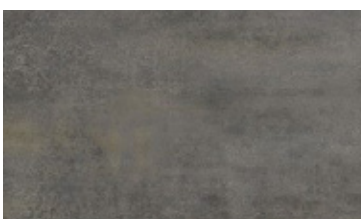
BROWN / MARRÓN / MARRON  
RAL 7006



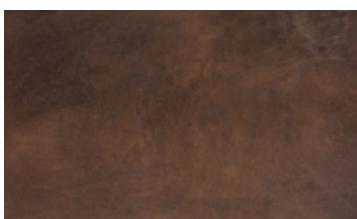
RED / ROJO / ROUGE  
RAL 3011



DARK GREEN / VERDE OSCURO / VERT  
RAL 6003



RUST GREY / GRIS ÓXIDO / GRIS ROUILLE



RUST BROWN / MARRÓN ÓXIDO /  
MARRON ROUILLE



# DUNAS XL

design – Christophe Pillet



INCLASS



DUNAS XL



INCLASS

## DUNAS XL

**en** — Designed by Christophe Pillet, the **DUNAS XL** collection is made up of spacious comfortable seating, available in two backrest heights which can be combined with either swivel or fixed bases. The upholstered elements and the different bases can be manufactured in all fabrics and finishes from the INCLASS swatch samples. Its enveloping contours along with a design of sophisticated, stylish and sleek lines find their place in cozy, contemporary spaces where one can comfortably wait, converse or simply relax.

**es** — Diseñada por Christophe Pillet, la colección **DUNAS XL** está formada por amplias y confortables butacas disponibles con dos alturas de respaldo que se combinan con bases giratorias o fijas. Los cuerpos tapizados y las distintas bases se pueden fabricar con todos los tejidos y acabados del muestrario INCLASS. Sus formas envolventes junto a un diseño de líneas puras, fluidas y elegantes encuentran su lugar en espacios acogedores y contemporáneos donde esperar, conversar, leer o simplemente relajarse.

**fr** — Conçu par Christophe Pillet, la collection **DUNAS XL** se compose de fauteuils spacieuses et confortables disponibles en deux hauteurs de dossier sont combinés avec des piétements giratoires ou fixes. L'assise tapissée et les différentes bases peuvent être fabriquées avec tous les tissus et les échantillons du nuancier INCLASS. Ses formes enveloppantes avec un design aux lignes pures, fluides et élégantes trouvent leur place dans des espaces confortables et contemporains où patienter, parler, lire ou simplement se détendre.



INCLASS

DUNAS XL



23

INCLASS

DUNAS XL



INCLASS







## DUNAS XL



**en** – The original rod base can be finished in a wide range of colours or in chrome. The coffee table complements the collection and is available with tops in oak veneer or lacquered in colours.

**es** – El original pie de varilla se acaba con una amplia gama de colores o en cromo. La mesa auxiliar complementa la colección y se fabrica con tapa de roble o lacada en colores.

**fr** – Le piétement en tige d'acier existe dans une large gamme de couleurs ou chromé. La table d'appoint complète la collection.

**INCLASS**

## DUNAS XL

**en** – Both the high-backrest and low-backrest chairs can be fitted with aluminium swivel bases with either a polished finish or painted in a choice of colours.

**es** – Tanto las butacas altas como las bajas pueden equipar bases giratorias de aluminio con acabado pulido o pintadas en colores.

**fr** – Les fauteuils hauts et bas peuvent être équipés du piétement giratoire en aluminium poli ou peint en couleurs.



INCLASS

DUNAS XL



INCLASS



DUNAS XL



INCLASS

DUNAS XL



INCLASS

DUNAS XL



INCLASS

DUNAS XL



INCLASS



# DUNAS XL

La colección – The collection – La collection



Low backrest with swivel base  
Respaldo bajo con base piroestabilizatoria  
Dossier bas avec pivotement giratoire



Low backrest with rod base  
Respaldo bajo con base varilla  
Dossier bas avec pivotement en tige d'acier



High backrest with swivel base  
Respaldo alto con base piroestabilizatoria  
Dossier haut avec pivotement giratoire



High backrest with rod base  
Respaldo alto con base varilla  
Dossier haut avec pivotement en tige d'acier



Coffee table with rod base  
Mesa auxiliar con base varilla  
Table avec pivotement en tige d'acier

## Acabados

**Tapicerías:** Las butacas se pueden tapizar con todos los tejidos y pieles del muestrario INCLASS y también con tejidos suministrados o especificados por el cliente.

**Bases metálicas:** Las bases de varilla están disponibles en todos los colores del muestrario INCLASS o en cromo. Las bases giratorias de aluminio están disponibles en todos los colores del muestrario INCLASS o con acabado pulido.

**Tapas de mesa:** Están disponibles en chapa de roble o lacadas en todos los colores del muestrario INCLASS.

## Finishings

**Upholstery:** The armchairs can be upholstered in any of the leathers or fabrics of the INCLASS swatch cards and also with fabrics supplied or specified by the customer.

**Metallic legs:** The rod bases are available in any of the colours of the INCLASS swatch cards or in chrome. The swivel aluminium bases are available in any of the colours of the INCLASS swatch samples or polished.

**Table tops:** Available in oak veneer or lacquered mdf in any of the colours of the INCLASS swatch cards.

## Finitions

**Tapiserie:** Les fauteuils peuvent être tapissés avec tous les tissus et cuirs du muestrario INCLASS ou en tissu client.

**Pieds metal:** Les pieds en tige d'acier existent dans toutes les couleurs de nuancier INCLASS ou chromé. Les pieds giratoires dans toutes les couleurs de nuancier INCLASS ou polisés.

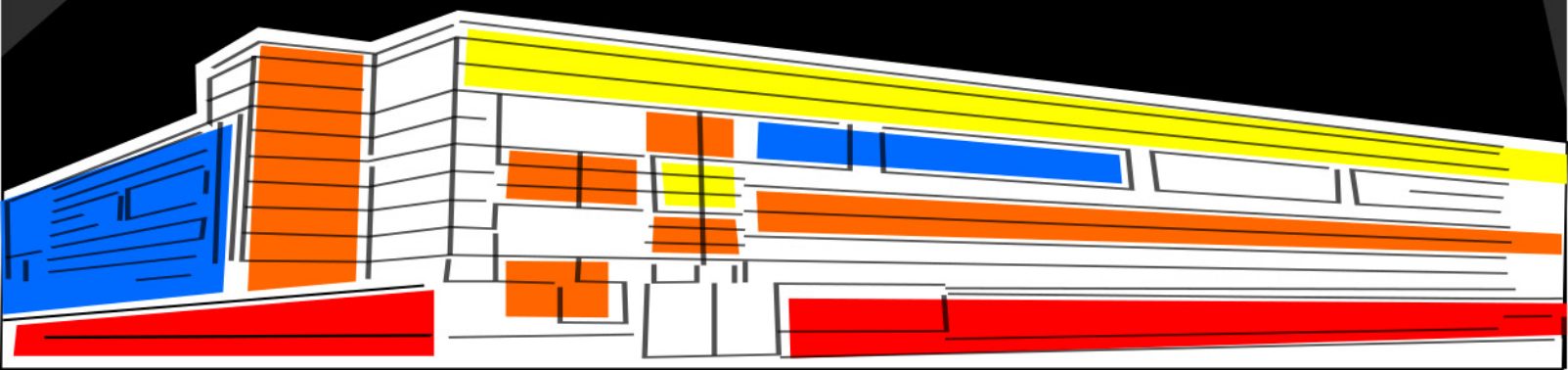
**Plateaux:** Existent en placage Chêne ou mdf laqué dans toutes les couleurs de nuancier bois INCLASS.

\*The design of this collection are protected by international industrial design registries.

INCLASS

[www.lambdatres.com](http://www.lambdatres.com)

**LAMBDATRES, S.A.**  
C/ Laguna de Cameros, 8  
28021 Madrid  
Tlf.: 914479577  
[lambdatres@lambdatres.com](mailto:lambdatres@lambdatres.com)



# DUNAS XS

design – Christophe Pillet



INCLASS



DUNAS xs



INCLASS

## DUNAS xs

**en** — Characterised by a sophisticated design, with sleek lines and essential elegance, **DUNAS xs** is a collection of chairs and armchairs of transversal use that originates from the combination of two seat bodies with a wide variety of bases, allowing endless possibilities of use in all kind of contexts and spaces, residential and public alike. The chairs are offered with a wide range of bases, fixed or swivel, in metal or wood, and which are available in a choice of different colours and finishes. The seat bodies can be upholstered in any of the leathers or fabrics of the INCLASS swatch samples and also with fabrics supplied or specified by the customer.

**es** — Caracterizada por un diseño depurado, de líneas fluidas y elegancia esencial, **DUNAS xs** es una colección de sillas y sillones de uso transversal que se origina a partir de la combinación de dos cuerpos de asiento con una extensa variedad de bases que permiten amplias posibilidades de uso en todo tipo de contextos y espacios, tanto residenciales como públicos. Las butacas se ofrecen con una amplia gama de bases, fijas y giratorias, de metal o madera, que además están disponibles en diferentes colores y acabados. Los cuerpos de asiento se pueden tapizar con todos los tejidos y pieles del muestrario INCLASS y también con tejidos especificados o suministrados por el cliente.

**fr** — Caractérisé par un design raffiné, aux lignes fluides et élégance simplifiée, **DUNAS xs** est une collection de chaises et fauteuils à utilisations transversal de la combinaison de deux corps de sièges avec une grande variété de piètements qui permettent plusieurs possibilités d'utilisation dans toutes sortes de contextes et d'espaces, à la fois résidentiels et publics. Les sièges sont disponibles avec un large éventail de piètements, fixe et giratoires, en métal ou en bois, ils sont également disponibles en différentes couleurs et finitions. Les assises peuvent être tapissées avec tous les tissus et cuirs du nuancier INCLASS ou en tissu client.



INCLASS

DUNAS xs



INCLASS





DUNAS xs



INCLASS

## DUNAS xs



**en** – The four-star swivel bases are available in two different designs: with either a flat base or a pyramidal-shaped base.

**es** – Las bases giratorias de cuatro radios están disponibles con dos diseños diferentes: base plana o base con forma piramidal.

**fr** – Les piètements giratoires à quatre branches existent en deux versions différentes: piètement plat ou pyramidal.

DUNAS xs



INCLASS



## DUNAS xs



**en** — The chairs and armchairs with wooden swivel bases are particularly elegant and unusual. The bases are made of oakwood and can be finished in different colours.

**es** — Las sillas y sillones con base de madera giratoria son especialmente elegantes y originales. La base es de madera de roble y se acaba en diferentes colores.

**fr** — Les fauteuils et les chaises giratoires avec piétement bois sont élégantes et originaux. Le piétement bois est en de chêne et finition en différentes couleurs.

DUNAS xs



INCLASS



DUNAS xs



INCLASS



DUNAS xs



5

INCLASS

DUNAS xs



INCLASS





## DUNAS xs



**en** – The fixed structures are perfectly integrated into the upholstered body and are available in either a four-legged tubular or rod version in the form of a cross.

**es** – Las estructuras fijas se integran perfectamente en el cuerpo tapizado y se ofrecen en versión de cuatro patas de tubo o de varilla en forma de cruz.

**fr** – Les structures fixes sont parfaitement intégrées dans le corps tapissé et existent en version quatre pieds en tube ou en tige d'acier croisée.

DUNAS xs



INCLASS



DUNAS xs



INCLASS



DUNAS xs



INCLASS

# DUNAS xs

## Sillas – **Chairs** – Chaises

---



Wooden swivel base  
Base piramidal madera  
Piétement bois piramidal



Trestle swivel base  
Base piramidal giratoria  
Piétement giratoire piramidal



Swivel base with casters  
Base giratoria con ruedas  
Piétement giratoire sur roulettes



Rod base  
Base varilla  
Piétement tige d'acier



Four legs base  
Base 4 patas  
4 pieds



Flat swivel base  
Base plana giratoria  
Piétement giratoire plat

## DUNAS xs

### Sillones – **Armchairs** – Fauteuils

---



Wooden swivel base  
Base piramidal madera  
Piétement bois piramidal



Metal swivel base  
Base piramidal giratoria  
Piétement giratoire piramidal



Swivel base with casters  
Base giratoria con ruedas  
Piétement giratoire sur roulettes



Rod base  
Base varilla  
Piétement tige d'acier



Four legs base  
Base 4 patas  
4 pieds



Flat swivel base  
Base plana giratoria  
Piétement giratoire plat

---

### Acabados

**Tapicerías:** Los asientos se pueden tapizar con todos los tejidos y pieles del muestrario INCLASS y también con tejidos suministrados o especificados por el cliente.

**Bases metálicas:** Están disponibles en todos los colores del muestrario INCLASS o en cromo.

**Bases de madera roble:** Se acaban en color natural.

---

### Finishings

**Upholstery:** The seats can be upholstered in any of the leathers or fabrics of the INCLASS swatch cards and also with fabrics supplied or specified by the customer.

**Metallic bases:** Are available in any of the colours of the INCLASS swatch cards or in chrome.

**Oak wooden bases:** Are finished in natural colour.

---

### Finitions

**Tapiserie:** Les fauteuils peuvent être tapissés avec tous les tissus et cuirs du nuancier INCLASS ou en tissu client.

**Pieds métal:** Ils existent dans toutes les couleurs du nuancier Inclass ou chromé.

**Pieds en bois de Chêne:** Finition en Chêne naturel.

\*The design of this collection are protected by international industrial design registries.

INCLASS

[www.lambdatres.com](http://www.lambdatres.com)

**LAMBDATRES, S.A.**

C/ Laguna de Cameros, 8

28021 Madrid

Tlf.: 914479577

[lambdatres@lambdatres.com](mailto:lambdatres@lambdatres.com)

